

GRADINA SAMOGRAD / ZAMINA





Ravne kotare, najplodniji dio sjeverne Dalmacije, karakterizira izmjena antiklinala (uzvišeni dio boranog reljefa) i sinklinala (udubljeni dio), koje prate dinarski smjer pružanja reljefa, od sjeverozapada prema jugoistoku. Upravo se na jednom takvom nizu uzvišenja, sjeveroistočno od Vranskog jezera, nalazi lokalitet čija se aktualna arheološka istraživanja opisuju u ovom radu. Brdo je na suvremenim kartama označeno toponimom Zamina, no gradina se u arheološkoj literaturi najčešće navodi pod imenom Samograd ili Vran-Samograd. Spominje se još od Josipa Alačevića (Alačević 1879: 10) i Grgura Urlič-Ivanovića (Urlič Ivanović 1881: 107–108.), a pojedini autori na nju ubiciraju *Blandonu* ili *Blanonu* koja se spominje u *Geografiji* Klaudija Ptolomeja te u *Antoninovu itinerariju* (Brusić 2007: 23, bilješka 15). M. Čelhar smatra kako je ovdje u mlađem željeznom dobu bilo središte teritorijalne općine, na kojem je život nastavljen i poslije, u rimsko doba (Čelhar 2014: 182–183).

Od 2017. godine na gradini se provode arheološka istraživanja u suradnji Agencije Han-Vrana i Odjela za arheologiju Sveučilišta u Zadru. U prvim trima kampanjama istraživanja su se provodila na

The region of Ravni Kotari, the most fertile part of northern Dalmatia, is characterized by an alternation of anticlines (elevated part of undulated relief) and synclines (downward part), which follow the Dinaric direction of the relief spreading, from the northwest to the southeast. It is precisely on such a series of elevations, northeast of Lake Vrana, that there is a site whose current archaeological research is described in this paper. The hill is marked with the toponym Zamina on modern maps, but the hillfort is most often mentioned in the archaeological literature under the name Samograd or Vran-Samograd. It is mentioned by Josip Alačević (Alačević 1879: 10) and Grgur Urlič-Ivanović (Urlič Ivanović 1881: 107–108), and some au-



Jure ŠUČUR

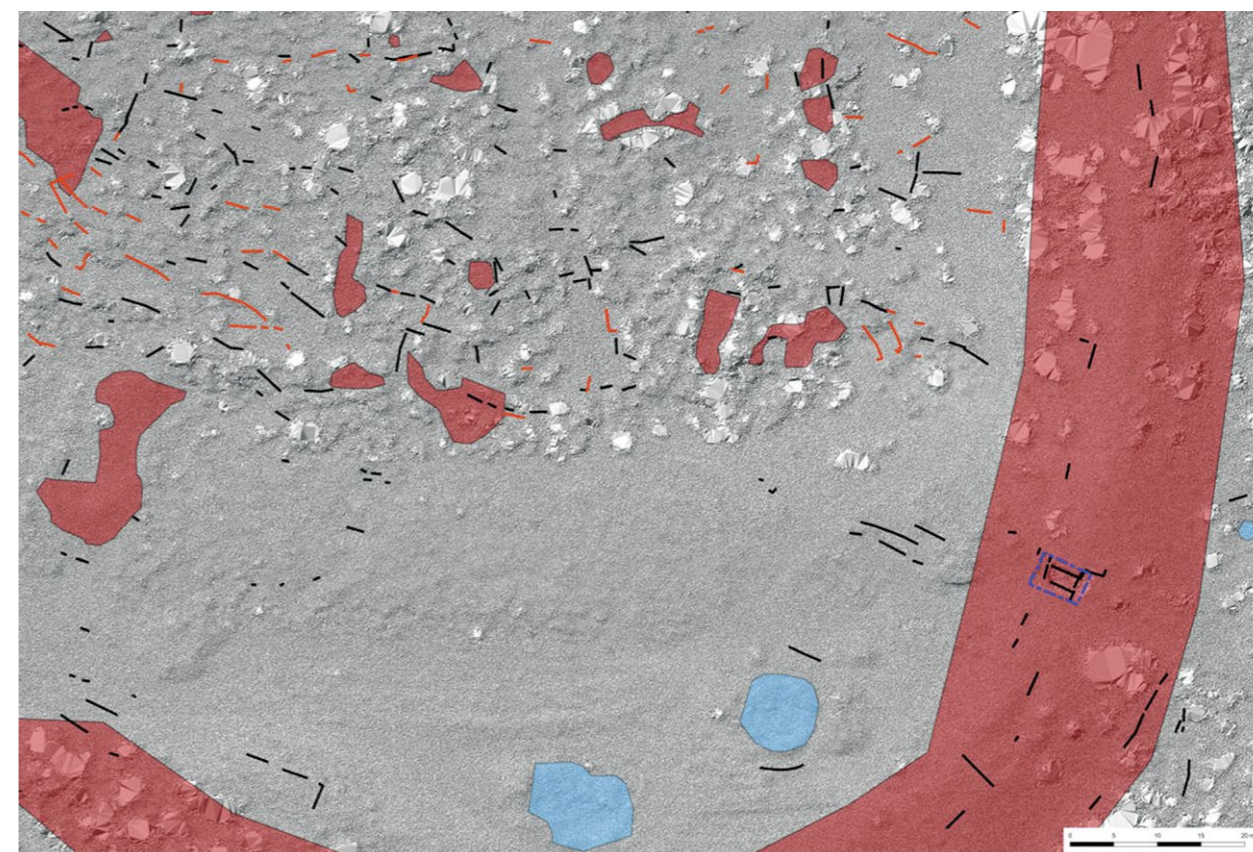
jsucur@gmail.com

Roman SCHOLZ

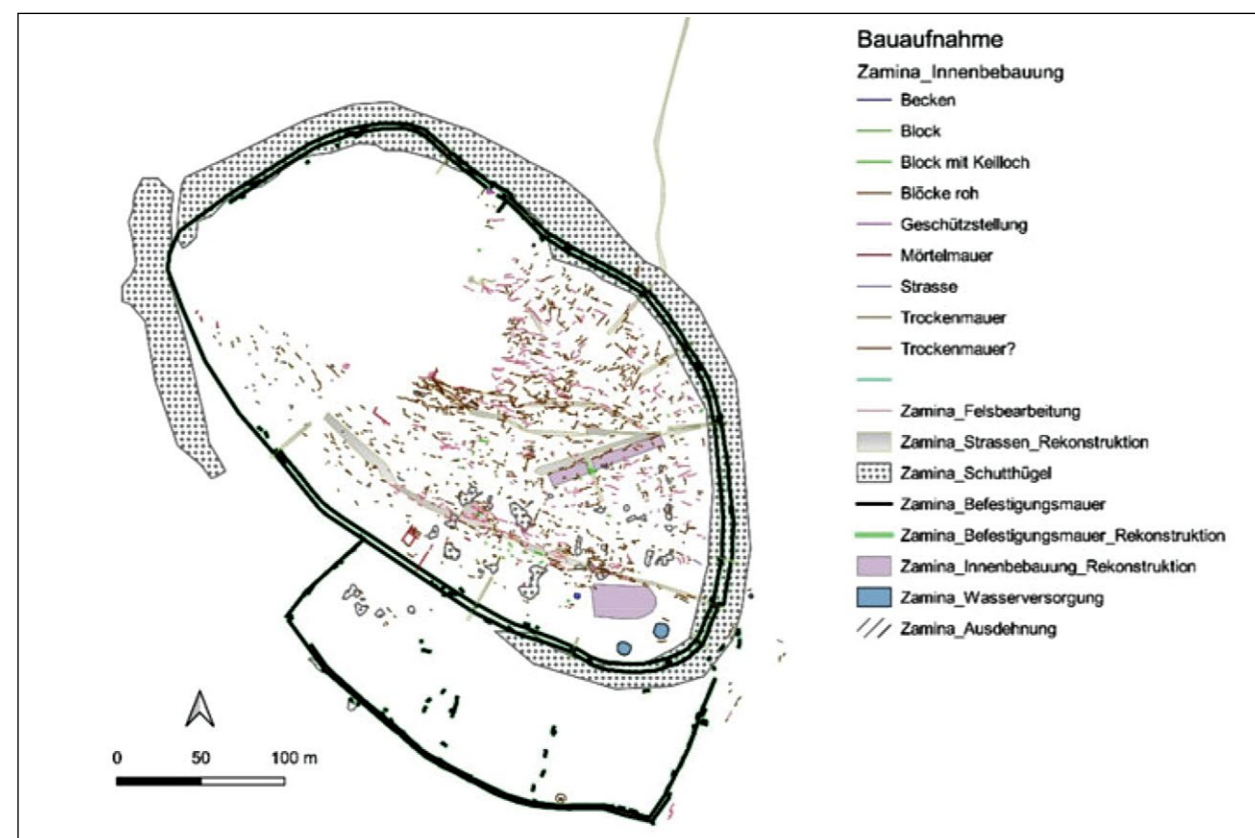
Roman.Scholz@dainst.de

thors refer to it as *Blandona* or *Blanona*, which is mentioned in the Geography of Claudius Ptolemy and in the Antonine Itinerary (Brusić 2007: 23, note 15). M. Čelhar believes that a center of the territorial municipality was situated here in the Late Iron Age, where life continued even later, in the Roman era (Čelhar 2014: 182–183).

Archaeological investigations have been carried out on the hillfort since 2017, in cooperation of the



Strukture zabilježene na jugoistočnom dijelu gradine (izrada: R. Scholz)
Structures recorded in the south-eastern part of the hillfort (made by: R. Scholz)



Površinski zabilježene strukture na gradini (izrada: G. Rasbach)
Structures recorded on the surface of the hillfort (made by: G. Rasbach)

jugozapadnoj padini gradine, na jednoj od nižih terasa, te je istražen dio termalnog sklopa urbane vile koja je, s obzirom na databilne nalaze, sa sigurnošću funkcionirala od 2. do 4. stoljeća, a pod istražene prostorije bio je prekriven loše očuvanim mozaikom. Sjeveroistočno od spomenute prostorije, osim sklopa kasnijih zidova, uočen je i mogući bedem, a iskapanjem smo dosegli slojeve 4. ili 3. st. pr. Kr. jer se pod prostoriju podvlači žuta glinena podnica na kojoj je pronađen dio kasnoliburnske certosoidne fibule.

Stručnu su nam pomoć i u ranijim godinama pružali njemački kolege, no od 2021. godine financiranje istraživanja preuzima Römisch-Germanische Kommission (RGK) u sklopu projekta *Besiedlung, Raumerschließung und -nutzung von der Eisenzeit bis in die Spätantike am Vrana-See* (Naseljavanje, razvoj i korištenje prostora od željeznog doba do kasne antike na prostoru Vranskog jezera). Četvrta (2021.) i peta (2022.) arheološka kampanja provedene su na jugoistočnom dijelu gradine gdje je istražen ulaz u naselje, kao i dio bedema. Ulaz je širok 1,6 m, bedemi pokazuju više faza, a u posljednjoj fazi jednim redom masivnog kamena zapriječen je prolaz, koji je vjerojatno i prije prestao funkcionirati. Uz samo iskopavanje, na cijeloj

Han Vrana Agency and the Department of Archaeology of the University of Zadar. In the first three campaigns, the research was carried out on the southwestern slope of the hill, on one of the lower terraces, and a part of the thermal complex of the urban villa was investigated, which, given the datable finds, was definitely functional from the 2nd to the 4th century, and the floor of the investigated room was covered with poorly preserved mosaic. To the northeast of the mentioned room, in addition to some later walls, a possible rampart was also observed, and through excavation we reached the layers of the 4th or 3rd century BC because under the room there is a yellow clay floor on which part of a late Liburnian pseudo-Certosia fibula was found.

German colleagues provided us with professional help in the earlier years, but from 2021, research funding will be taken over by the Römisch-Germanische Kommission (RGK) as part of the project *Besiedlung, Raumerschließung und -nutzung von der Eisenzeit bis in die Spätantike am Vrana-See* (Settlement, development and the use of space from the Iron Age to Late Antiquity in the Lake Vrana region). The fourth (2021) and fifth (2022) archaeological campaigns were carried out in the south-





Uklanjanje vegetacije oko platoa na jugoistoku gradine (foto: J. Šučur)
 Removal of vegetation around the plateau in the southeast of the hillfort (photo: J. Šučur)

površini lokaliteta bilježene su sve strukture koje je bilo moguće uočiti, te se na taj način stvara prostorna baza podataka koja će integrirati sve spoznaje, i one dobivene iskopavanjem i one dobivene korištenjem nedestruktivnih metoda. Uz voditelja istraživanja, Marka Meštrova iz Interpretacijskog centra Maškovića han, i zamjenika, Juru Šučura s Odjela za arheologiju Sveučilišta u Zadru, stručnu ekipu sačinjavali su Roman Scholz i Gabriele Rasbach iz Römisch-Germanische Kommission, te Judith Ley i Franziska Lang s Technische Universität Darmstadt.

U 2023. godini uloge voditelja i zamjenika su zamijenjene, a uz već spomenute članove stručnog tima sudjelovali su i studenti arheologije: Victoria Holze, Agata Karan, Monika Špoljarić, Helena Žigić, Kristina Valjan, Ivan Klasan i Ivana Josić. Tijekom ovogodišnje kampanje nisu se provodila iskopavanja, već se nastavio rad na otkrivanju i kartiranju površinski vidljivih ostataka, ponajprije ostataka građevina (zidova kuća, fortifikacijskih elemenata itd.), ali i znakovitih pokretnih nalaza pronađenih tijekom obilaska. Spomenute aktivnosti odvijale su se u dva segmenta. Jednim je dijelom nastavljen detaljan pregled gradine na prostoru koji nije obuhvaćen prethodnih godina, dok se drugi dio sasto-

eastern part of the hillfort, where the entrance to the settlement and part of the ramparts were investigated. The entrance is 1.6 m wide, the ramparts show several phases, and in the last phase, a single row of massive stones was used to block a passage, which, in all likelihood, had no longer been functional at the time. In addition to the excavation, all the structures that could be observed were recorded on the entire surface of the site, thus creating a spatial database that will integrate all information, both those obtained by excavation and those obtained using non-destructive methods. Along with the leader of the research, Marko Meštrov from the Interpretation Center Maškovića Han, and the deputy, Jure Šučur from the Department of Archaeology of the University of Zadar, the expert team consisted of Roman Scholz and Gabriele Rasbach from the Römisch-Germanische Kommission, and Judith Ley and Franziska Lang from the Technische Universität Darmstadt.

In 2023, the roles of leader and deputy were switched, and in addition to the already mentioned members of the expert team, archaeology students also participated: Victoria Holze, Agata Karan, Monika Špoljarić, Helena Žigić, Kristina Valjan, Ivan Klasan and Ivana Josić. During this year's

jao od uklanjanja vegetacije, drveća, grmlja i trave, prije bilježenja vidljivih struktura na južnom dijelu gradine.

Naime, na jugoistočnom dijelu gradine, u nastavku komunikacije koja od istraženog ulaza ide prema zapadu nalazi se veći plato, na kojem gotovo uopće nisu vidljive nikakve strukture. Na tom je mjestu još Luka Jelić pretpostavio postojanje foruma, a u ovoj se kampanji od vegetacije čistio okolni prostor te su dokumentirane sve strukture uočene na tom dijelu kako bi se područje pripremilo za sljedeću kampanju.

campaign, no excavations were carried out, but work continued on the discovery and mapping of the features visible on the surface, primarily the remains of buildings (walls of houses, fortification elements, etc.), but also significant small finds recovered in the survey. The mentioned activities took place in two segments. One part continued the detailed inspection of the hillfort in an area that was not covered in previous years, while the second part consisted of the removal of vegetation, trees, bushes and grass, before recording the visible structures on the southern part of the hillfort.

Namely, in the southeastern part of the hillfort, in the continuation of the communication route that goes west from the explored entrance, there is a larger plateau, on which almost no structures are visible. At that place, Luka Jelić assumed the existence of a forum, and in this campaign, the surrounding area was cleared of vegetation, and all the structures observed in that part were documented in order to prepare the area for the next campaign.

LITERATURA / BIBLIOGRAPHY

ALAČEVIĆ, D. 1879, Rovine antiche nel distretto politico di Benkovac, *Bullettino di Archeologia e Storia Dalmata*, II, 10–12; 28–29; 39–42; 72–74; 88–90.

ČELHAR, M. 2014, *Naselja južne Liburnije u željezno doba*, Zadar: Sveučilište u Zadru (neobjavljeni doktorski rad).

BRUSIĆ, Z. 2007, Pakoštanska luka i druga priobalna liburnska naselja u Pašmanskome kanalu u odnosu na gradinska naselja u zaleđu i Aseriju, *Asseria*, 5, 11–38.

URLIĆ IVANOVIĆ, G. 1881, Ruševine Kotarske, *Bullettino di Archeologia e Storia Dalmata*, IV, 74–76, 107–109, 156–158.

