



ARHEOLOŠKA ISTRAŽIVANJA NA LOKALITETU LJUBLJANA NA LJUBAČKOJ KOSI

Archaeological investigations at the Ljubljana site on Ljubačka kosa

Studentska terenska nastava započela je ove godine u nešto ranijem terminu nego inače. Temperature su sve veće svake godine pa smo odlučili započeti s praksom u travnju ne bismo li izbjegli lipanjske toplotne udare. I dalje se ona odvija na lokalitetu Ljubljana, na samom kraju Ljubačke kose, a s obzirom na to da u protekloj kampanji nismo dosegli sterilne slojeve ili matičnu stijenu, i dalje istražujemo na dvjema lokacijama: crkva Sv. Marije i sv. Marcele. Paralelno s iskopavanjem obavljala se i konzervacija ostataka ulazne kule koju provodi tvrtka Travej d. o. o. s ciljem zaštite i prezentacije nalazišta.

Također, prije same studentske prakse, u suradnji s Ecole Francaise de Rome, Bourgogne Franche-Comte i sveučilištem Kardinal Stefan Wyszynski u Varšavi, u okviru projekta *Monacorale* napravljena su geofizička istraživanja prostora uokolo crkve

This year, the student fieldwork began a little earlier than usual. Temperatures are getting higher every year, so we decided to start the practice in April in order to avoid the June heatwaves. It is still taking place at the Ljubljana site, at the very end of Ljubačka kosa, and since we did not reach the sterile layers or bedrock in the previous campaign, we are still exploring at two locations: the church of St. Mary and St. Marcella. In parallel with the excavation, the conservation of the remains of the entrance tower was carried out by the Travej company with the aim of protecting and presenting the site.

Also, before the student practice, geophysical surveys of the area around the church of St. Mary were carried out with the aim of gaining a better insight into the archaeological contexts and to ensure better control of future archaeological excava-


Dario VUJEVIĆ
dario.vujevic@gmail.com

Karla GUSAR
kgusar@unizd.hr

sv. Marije s ciljem dobivanja boljeg uvida u arheološke kontekste, što će poslužiti za bolju kontrolu budućih arheoloških iskopavanja. Nažalost, geofizički rezultati bili su vrlo slabi. Zbog sličnog sastava kontrast između sačuvanih struktura i okolnog prostora je bio slab. Iz tog razloga georadar nije dao očekivane rezultate, a isto se ponovilo i s magnetometrom.

Na području uokolo crkve Sv. Marije još od protekle kampanje usmjereni smo na istraživanje prostora južno od same crkve. Iako je početna površina iznosila 7 x 10 m, u nekoliko je navrata prostor proširen, prije svega zbog različitih grobova čije je cjelovito istraživanje zahtijevalo širenje. Razina s koje smo počeli ovogodišnje iskopavanje nalazi se na 120 cm dubine od vrha južnog profila i na 75 cm dubine u odnosu na sjeverni profil. U protekloj kampanji dobrim je dijelom uklonjen najmlađi sloj grobova, onaj koji bismo okvirno mogli datirati u kasni srednji vijek. Pa ipak, različite razine ukapanja, višestruki, sukcesivni ukopi na istom mjestu, znače da se i na ovim razinama povremeno pojavljuju i grobovi iz mlađe faze.

Druga razina grobova, ona koja je u fokusu ovogodišnjih iskopavanja, nešto je starija i vjerojatno je povezana s razvijenim ili ranim srednjim vijekom.

These surveys were conducted in collaboration with the Ecole Francaise de Rome, Bourgogne Franche-Comte and the Cardinal Stefan Wyszynski University in Warsaw, within the framework of the *Monacorale* project. Unfortunately, the geophysical results were very poor. Due to the similar composition, the contrast between the preserved structures and the surrounding area was weak. For this reason, the ground-penetrating radar did not give the expected results, and neither did the magnetometer.

In the area around the church of St. Mary, since the last campaign, we have been focused on exploring the area south of the church. Although the initial area was 7x10 m, the area has been expanded on several occasions, primarily due to various graves whose complete research required expansion. The level from which we began this year's excavation is located at a depth of 120 cm from the top of the southern profile and at a depth of 75 cm in relation to the northern profile. In the last campaign, the youngest layer of graves, the one that could roughly be dated to the Late Middle Ages, was largely removed. However, different levels of burying, multiple, successive burials at the same place, mean that graves from a younger phase oc-



Čišćenje groba (foto: M. Šimičić)
Grave cleaning (photo: M. Šimičić)





Za razliku od prethodne, grobovi ove razine nerijetko imaju arhitekturu od sleganoga amorfnog kamena, iako su pojedini ukopani samo u zemljanu raku. Tek rijetki grobovi imaju sačuvane poklopnice. U grobovima se najčešće nalazi jedan pokojnik, iako se uz njega u pravilu nalaze dislocirane kosti. Pa ipak, teško je reći koliko te kosti potječu od starijih ukopa unutar istog groba, ili je pak riječ o dijelovima kostura starijih pokopa na koje se naišlo tijekom ukopavanja novog groba pa su posloženi uz pokojnika. Iako je ovo drugo vjerojatno češće, pojedini grobovi zaista pokazuju sukcesivno korištenje istoga grobnog mjesta. Npr. u Grobu 70 nalaze se pokojnici položeni u tri razine pokopa. Svi su položeni u istom smjeru, u svim trima slučajevima riječ je o pokopu djece, a pri pokapanju mlađi pokojnici nisu oštetili starije.

Pokojnici su najčešće položeni u ispruženi položaj u pravcu sjeverozapad-jugoistok (uz male varijacije prema zapadu) s glavom na sjeverozapadu. Odstupanja u položaju odnose se tek na položaj ruku, pri čemu se one nalaze savijene na prostoru zdjelice/trbuha ili prekržene na prsima. Nešto su rjeđi slučajevi u kojima su ruke položene u ispruženom položaju uz tijelo.

Od nalaza u grobu najčešće pronalazimo tek željezne čavle, ali pojedini pokopi imaju sačuvane i dijelove nožnje. U trima grobovima pronađene su srebrne karičice s tri koljenca. Njihov pronalazak nije povezan s određenom vrstom groba, jer su pronađene i u grobovima s arhitekturom i u običnom pokopu u jami. Načinjene su od srebra, od kružno savijene žice čija je donja polovica karike ukrašena s tri jednako udaljena koljenca. Karičice s tri koljenca postoje u više varijanti, a rađene su tehnikom filigrana ili/i granulacije. U literaturi se različito datiraju. Njihova pojava smješta se u rani srednji vijek, i to u kraj 10. ili 11. stoljeća (Burić 2001: 212; Petrinec 2008: 227–228; 2009: 182–183), dok se za raskošnije ukrašene primjerke smatra da su najviše u upotrebi tijekom razvijenoga srednjeg vijeka u 12. i 13. stoljeću (Burić 2001: 212), odnosno razvijenoga i kasnoga srednjeg vijeka, i to osobito tijekom druge polovine 13. i prve polovine 14. stoljeća (Petrinec 2008: 227–228; 2009: 182–183). Radiokarbonsko datiranje jednog od grobova s Ljubljane stavlja ih u period 1180 – 1280 kal. god. po Kr. (DeA-50009, 816 ± 21 bp). Osim karičica, u jednom je grobu pronađen

.....
Pogled na Sv. Mariju (foto: M. Šimičić)
View of the church of St. Mary (photo: M. Šimičić)





srebrni novac *piccolo scodellato* kao i srebrna kruna prstena. Takvi zdjeliciasti srebrni denari kovani su u Veneciji za raznih duževa tijekom 12. i 13. stoljeća (Montenegro 2012; Baraka, Šučur 2011).

Jedan od zanimljivijih nalaza iz ove kampanje pronađen je u Grobu 72. Sam grob ni po čemu ne odskaje od ostalih. Riječ je o jednostavnom pokopu u zemljanu raku. Pokojnik je položen u ispruženi položaj, na leđa u pravcu zapad-istok. Ruke su mu bile prekrížene na području zdjelice. No, ono što odskaje od standardnih nalaza jesu ostatci olovnog kaleža položeni između koljena. Sudeći po pronađenim ostacima, kalež je stajao uspravno. Sličan kalež, uz razliku što je taj pronađen uz glavu pokojnika, pronađen je tijekom istraživanja groblja kraj kapele sv. Ane u Gornjem Kosinju, a jedan je pronađen i na Aseriji (Azinović Bebek 2021). Metalni kaleži nalaze se u grobovima koje gotovo uvijek možemo definirati kao svećeničke ukope (Gilchrist, Sloane 2005: 160). Radiokarbonsko datiranje pokojnika smješta ovaj ukop u vrijeme 1260 – 1300 kal. god. po Kr. (DeA-50008, 734 ± 21 bp).

Osim spomenutih pokopa, tijekom ovogodišnjih iskopavanja uz crkvu Sv. Marije istražena je i jedna zidana srednjovjekovna grobnica, neposredno uz

asionally appear at these levels as well.

The second level of graves, the one that is the focus of this year's excavations, is somewhat older and is probably associated with the High or Early Middle Ages. Unlike the previous one, the graves of this level often have an architecture of stacked amorphous stones, although some refer to burials in earthen pits. Only a few graves have preserved covers. The graves most often contain a single deceased, although dislocated bones are usually found next to them. However, it is difficult to say to what extent these bones originate from older burials within the same grave, or whether they are parts of skeletons from older burials that were found when digging a new grave and were arranged next to the deceased. Although the latter is probably more common, some graves do indeed show the successive use of the same burial site. For example, deceased are laid in three burial levels in Grave 70. All were laid in the same direction, in all three cases it is the burial of children, and during the burial the younger deceased did not damage the older ones.

The deceased are most often laid in an extended position in a northwest-southeast direction (with small variations towards the west) with the head

južni zid crkve. Grobnica je pravokutnog oblika, slagana od amorfnog kamenja, kamenih blokova i kamenih ploča povezanih žbukom. S obzirom na položaj i razinu na kojoj je pronađena, riječ je o grobnici koja je podignuta otprilike kada i sama crkva, no s obzirom na veliku količinu dislociranih kostiju u njoj, možemo reći da je služila kao kosturnica tijekom dužeg vremena. Na dnu grobnice nalaze se ostatci prvotnog pokojnika uz kojeg je pronađeno desetak srebrnih kuglastih dugmadi s ušicom na vrhu. Riječ je o obliku dijela nošnje koji jako dugo traje. Srebrni primjerci najčešće se javljaju u periodu od 13. do 15. stoljeća, dok se isti oblik, u varijanti od drugih metala proteže i tijekom novog vijeka sve do 18. stoljeća (Egan, Pritchard 1991: 272, 276; Gusar, Vujević 2014: 279; Bradara, Krnjak 2015: 211–212).

Još je jedna zidana grobnica bila predmet istraživanja, ali ona nije povezana s prethodno spomenutim fazama ukapanja. Naime ispod jugozapadnog kuta crkve Sv. Marije, na mjestu gdje matična stijena naglo pada, na dubini od 110 cm od visine praga crkve pronađena je grobnica slagana od amorfnog kamenja i kamenih ploča povezanih žbukom. Grobnica je sačuvana u svojoj istočnoj polovici. Središnji dio nalazi se ispod zapadnog zida crkve Sv. Marije, a pretpostavljamo da je ostatak uništen pri gradnji zidane Grobnice 11 koja se nalazi ispred same crkve (Vujević et al. 2024). U grobu se nalaze ostatci samo jednog pokojnika. Pokojnik je bio položen u ispruženi položaj, u pravcu sjeverozapad-jugoistok. Noge su jedino što je sačuvano od kostura, što se uklapa u pretpostavku da je ostatak pokopa uništen gradnjom Grobnice 11. Od nalaza u grobu imamo tek nekoliko većih željeznih čavala. S obzirom na dubinu pokopa, njegov stratigrafski položaj, kao i na karakteristike grobnice, ovu grobnicu možemo datirati u vrijeme prije ranoga srednjeg vijeka, no za točnu kronologiju morat ćemo pričekati rezultate 14C datiranja.

Grobovi zauzimaju većinu istražene površine, no na razini iznad zdravice vidljive su i pojedine strukture nepovezane s pogrebnim ritualom. Izuzev jednog zida slagana od klesanog i amorfnog kamenja uz slabu upotrebu žbuke, koji je u određenim fazama groblja služio kao ogradni zid, ostale su strukture relativno kronološki starije od pokopa jer su uništene pri ukopavanju grobova, čak i onih najranijih. S druge strane, iste te strukture nemaju direktnu vezu s crkvom Sv. Marije, nego se nalaze stratigrafski ispod, tj. starije su od same crkve. Ri-



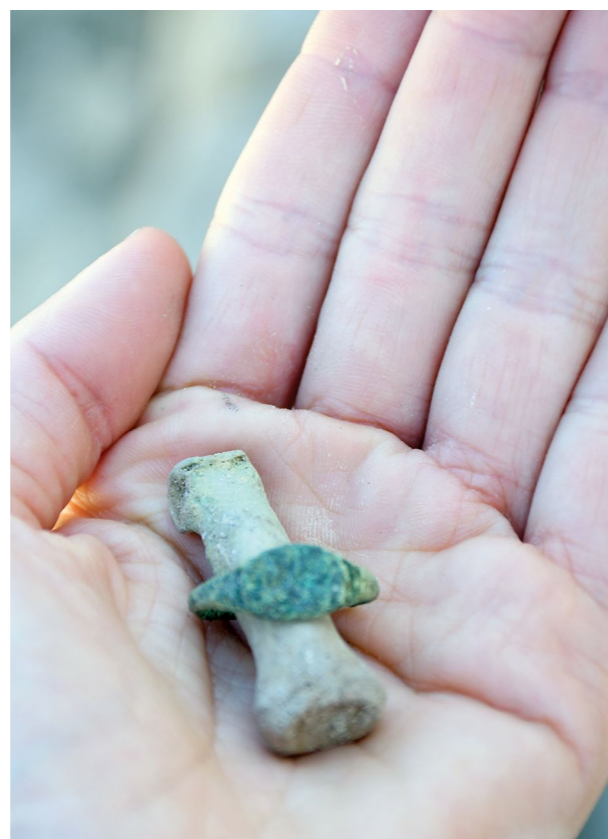
Nalaz rimske kocke (foto: N. Ćuk)
Find of a Roman dice (photo: N. Ćuk)

to the northwest. The only deviations in position relate to the position of the arms, when they are bent in the pelvis/abdomen area or crossed on the chest. Cases in which the arms are laid alongside the body are somewhat less common.

Of the finds in the grave, we most often find only iron nails, but some burials also have preserved dress accessories. In 3 graves, silver circlets with three knots were found. Their discovery is not linked to a specific type of grave, as they were found both in graves with architecture and in ordinary burials in pits. They are made of silver, from a circularly bent wire. The lower half of the circlet is decorated with three equally spaced knots. The three-knot circlets come in several variants, and are made using the filigree and/or granulation technique. They are dated differently in the literature. Their appearance is placed in the Early Middle Ages, at the end of the 10th or 11th century (Burić 2001: 212; Petrinec 2008: 227-228; 2009:182-183), while the more lavishly decorated examples are considered to have been used most widely during the High Middle Ages in the 12th and 13th centuries (Burić 2001: 212), or the High and Late Middle Ages, especially during the second half of the 13th and first half of the 14th century (Petrinec 2008: 227-228; 2009: 182-183). Radiocarbon dating of one



Mjerenje (foto: N. Ćuk)
Measuring (photo: N. Ćuk)



Na tvojoj ruci prsten (foto: M. Šimičić)
Ring on her finger (photo: M. Šimičić)





of the graves from Ljubljana places them in the period 1180 – 1280 cal. AD (DeA-50009, 816 ± 21 bp). In addition to the circlets, a silver coin “*piccolo scodelato*” was found in one grave as well as a silver ring crown. Such scyphate silver denarii were minted in Venice for various doges during the 12th and 13th centuries (Montenegro 2012; Baraka, Šučur 2011).

One of the more interesting finds from this campaign was found in Grave 72. The grave itself does not stand out from the others in any way. It is a simple burial in an earthen pit. The deceased was laid in an extended position, on his back in a west-east direction. His arms were crossed in the pelvic area. However, the remains of a lead chalice placed between the knees are definitely not a standard find. Judging by the remains found, the chalice was standing upright. A similar chalice, found next to the head of the deceased, was unearthed during the excavation of the cemetery near the chapel of St. Anne in Gornji Kosinj, and one was also found at Asseria (Azinović Bebek 2021). Metal chalices are found in graves that can almost always be defined as priestly burials (Gilchrist, Sloane 2005: 160). Radiocarbon dating of the deceased places this burial in the period 1260 – 1300 cal. AD (DeA-50008, 734 ± 21 bp).

In addition to the aforementioned burials, a stone-built medieval tomb was also explored, right next to the southern wall of the church during this year's excavations next to the church of St. Mary. The tomb is rectangular in shape, made of amorphous stones, stone blocks and stone slabs connected with plaster. Considering the position and level at which it was found, it is a tomb that was built at about the same time as the church itself, but given the large amount of dislocated bones in it, we can say that it served as an ossuary for a long time. At the bottom of the tomb are the remains of the original deceased, next to which were about a dozen silver spherical buttons with a hoop on the top. This is a form of part of the costume that lasts a very long time. Silver examples most often appear in the period from the 13th to the 15th century, while the same form, in variants made of other metals, extends throughout the Modern Period until the 18th century (Egan, Pritchard 1991: 272, 276; Gusar, Vujević 2014: 279; Bradara, Krnjak 2015: 211-212).

Pogled na Sv. Marcellu (foto: M. Šimičić)
View of the church of St. Marcella (photo: M. Šimičić)



Another stone-built tomb was investigated, but it is not connected to the previously mentioned phases of burial. Namely, a tomb made of amorphous stones and stone slabs connected by plaster was found under the southwestern corner of the church of St. Mary, at a place where the bedrock drops abruptly, at a depth of 110 cm from the height of the church threshold. The tomb is preserved in its eastern half. The central part is located under the western wall of the church of St. Mary, and we assume that the rest was destroyed during the construction of the stone-built Tomb 11, which is located in front of the church (Vujević et al. 2024). The tomb contains the remains of only one deceased. The deceased was laid in an extended position, in a northwest-southeast direction. The legs are the only part of the skeleton that has been preserved, which corresponds to the assumption that the rest of the burial was destroyed during the construction of Tomb 11. Of the finds in the tomb, there are only a few larger iron nails. Given the depth of the burial, its stratigraphic position, as well as the characteristics of the tomb, we can date this tomb to the time before the Early Middle Ages, but for an exact chronology we will have to wait for the results of 14C dating.

The graves occupy most of the excavated area, but at the level above the bedrock, some structures not related to the funeral ritual are also visible. With the exception of one wall made of carved and amorphous stones with little use of plaster, which served as a boundary wall in certain phases of the cemetery, the other structures are older than the burials in relative chronological terms because they were destroyed during the burial of the graves, even the earliest ones. On the other hand, these same structures have no direct connection with the church of St. Mary, but are located stratigraphically below, i.e. they are older than the church itself. These are the remains of walls of older buildings, but due to the fact that they are poorly preserved or discovered on a small area, we cannot say what type of building these walls belong to.

Among the structures that date back to the time before the church was built are the remains of a dry stone wall found along the southern profile, where the stones were bound together with clay. This dry stone wall was partly used for later burials,

Iskopavanje Sv. Marcele (foto: N. Ćuk)
Excavation of the church of St. Marcella (photo: N. Ćuk)





... Dokumentacija (foto: N. Čuk)
 ... Documentation (photo: N. Čuk)

ječ je o ostacima zidova starijih objekata, ali zbog činjenice da su slabo sačuvani ili otkriveni na maloj površini, ne možemo govoriti o tome kakvom tipu objekta ti zidovi pripadaju.

Među strukturama koje potječu iz vremena prije gradnje crkve nalaze se i ostaci suhozida pronađenog uz južni profil, kod kojeg je kamenje povezano glinom. Ovaj suhozid dijelom je iskorišten kao arhitektura za kasnije ukope, a dijelom je i uništen njihovim ukapanjem. Nažalost, i on je sačuvan samo na manjoj površini, pa je teško govoriti o njegovoj namjeni.

Na prostoru crkve sv. Marcele također se nastavilo tamo gdje se stalo u protekloj kampanji, unutar troapsidalnog proširenja crkve. Radovi su prošireni i na malu prostoriju sjeverno od crkvenog broda. S obzirom na to da su ispod temelja prostorije pronađeni ukopi, možemo pretpostaviti da je prostorija dodana na crkvu naknadno, vjerojatno u vrijeme njezina širenja, kada je dodan i dio s tri apside.

S obzirom na to da je na troapsidalnom dijelu još od prošle kampanje ostalo neistraženih dijelova, u ovoj kampanji pojavili su se grobovi iz svih zastupljenih razdoblja. Ukupno su do sada pronađena i istražena 84 groba. Situacija se ne razlikuje previše od protekle kampanje. Mlađu fazu ukopa

and partly destroyed by their burial. Unfortunately, it has also been preserved only on a small area, so it is difficult to speak about its purpose.

In the area of the church of St. Marcella, work also continued where we left off in the previous campaign, within the three-apse extension of the church. The work was also extended to a small room north of the nave. Given that burials were found under the foundations of the room, we can assume that the room was added to the church later, probably at the time of its expansion, when the part with three apses was added.

As there have been some unexplored parts of the triapsal section since the last campaign, graves from all the periods represented have appeared in this campaign. A total of 84 graves have been found and explored so far. The situation is not much different from the previous campaign. The younger phase of burials continues to consist of tombs made of stone blocks, slabs or amorphous stones, laid without the use of plaster. Judging by the research so far, this last phase of burials can be placed at the time when the use of the apsidal space as a sacred part ceased at the very end of the 17th and beginning of the 18th century (Vujević et al. 2024).



... Prosijavanje (foto: N. Čuk)
 ... Sieving (photo: N. Čuk)



... Priprema za dokumentaciju (foto: N. Čuk)
 ... Preparation for documenting (photo: N. Čuk)





i dalje čine grobnice s arhitekturom od kamenih blokova, ploča ili amorfno kamenja, slaganih bez upotrebe žbuke. Sudeći po dosadašnjim istraživanjima ovu, posljednju fazu ukapanja možemo staviti u vrijeme prestanka korištenja apsidalnog prostora kao sakralnog dijela u sam kraj 17. i početak 18. stoljeća (Vujević *et al.* 2024).

Najbolji primjeri iz ove kampanje pronađeni su ispod kamenog popločenja uz južni zid proširenja crkve. Nalazi u sloju ispod popločenja, datirani sve do u 17. stoljeće, dali su *terminus post quem* za samo popločenje, tj. potvrdili su još jednom da je ovo popločenje dio poda posljednje faze objekta, iz vremena kada je obavljano ukopavanje u okolne zidane grobnice. Odgovara to i nalazima pronađenim u zapuni grobnica ispod popločenja kod kojih također nalazimo mlađi materijal, npr. ulomke majoličkih vrčeva iz 17. stoljeća. Nalazi pak povezani s *in situ* pokojnicima u istraženim grobnicama potječu iz novog vijeka, među kojima nalazimo uobičajen nakit poput vitica ili dijelova nošnje kao što su aplike, igle/ukosnice, dugmad ili kopče. Najbrojnije nalaze čine devocionalije; krunice, medaljice i križevi. Također je prisutna velika količina koštanih i staklenih perli koje su mogle činiti dio krunica, ali i nakita.

The best examples from this campaign were found under the stone paving along the southern wall of the church extension. The finds in the layer under the paving, dated to the 17th century, provided a *terminus post quem* for the paving, i.e. they confirmed once again that this paving is part of the floor of the last phase of the building, from the time when burials were performed in the surrounding stone-built tombs. This also corresponds to the finds found in the fill of the tombs under the paving, where we also find younger material, e.g. fragments of majolica jugs from the 17th century. The finds associated with the *in situ* deceased in the excavated tombs, however, date from the Modern Period, among which we find common jewelry such as plain rings or dress accessories such as appliqués, pins/hairpins, buttons or clasps. The most numerous finds are devotional items; rosaries, medals and crosses. There is also a large amount of bone and glass beads that could have formed part of rosaries, but also jewelry.

The central phase of burials includes graves from the time when the structure functioned as a sacred building with three apses. Several burials in a simple pit in an extended position with arms alongside the body can be linked to the later pe-

Središnjoj fazi ukopa pripadaju grobovi iz vremena kada je objekt funkcionirao kao sakralni objekt s tri apside. Nekoliko ukopa u jednostavnu raku u ispruženom položaju s rukama uz tijelo nalazima se može povezati s kasnijim razdobljima srednjeg vijeka. Brončane ažule imaju široki raspon datiranja, ali nalazi prstenja, pogotovo pečatnjaka s prikazom datiraju ove grobove od kraja 14. do kraja 16. stoljeća.

Najstarija dokumentirana faza ukopa na ovom dijelu potječe iz starije faze crkve, iz vremena kada je ona imala samo jednu apsidu i kada se na prostoru tropasidalnog dijela, ali i izvan njega nalazilo pripadajuće groblje. Riječ je o ukopima u običnoj zemljanoj raci, zapravo više o njihovim ostatcima jer ih je dobar dio uništen kasnijim ukopima ili gradnjom troapsidalnog dijela crkve. Nalaza u ovim grobovima nije bilo, ali situacija u kojoj se dio ovih grobova nalazi ispod zidova troapsidalnog dijela daje im *terminus ante quem*, tj. smješta ih u razdoblje prije gradnje proširenja crkve. Sudeći po nalazima s prostora groblja istraženog u prvoj kampanji, najranije bismo ih mogli datirati u 10./11. stoljeće (Vujević *et al.* 2023), iako su, s obzirom na to da nemaju arhitekturu ili nalaze kao najstariji ukopi pronađeni na tom dijelu groblja, vjerojatno nešto mlađi od toga.

Razlika u odnosu na proteklu kampanju jest ta što su tijekom ovogodišnjih iskopavanja otkriveni nalazi iz vremena kasne antike. U sjeverozapadnom kutu proširenja crkve, nakon uklanjanja grobova, pronađeni su ostatci kuta objekta rađenog od priklesanog kamena vezanog žbukom. Objekt ne prati orijentaciju crkve, pa je upitno je li riječ o sakralnom objektu. Unutrašnjost mu je bila prekrivena slojem gareži ispod kojeg su nađene tanke mramorne ploče koje vjerojatno čine popločenje navedenog prostora. U samom kutu objekta nalazio se i jedan grob koji je probio pod objekta. Zidana grobnica bila je poklopljena pločom od pješčenjaka debljine 17 cm koja je popucala zbog kasnijih ukopa na istom mjestu. Sve su stranice groba ožbukane. U grobu je pronađen *in situ* pokojnik položen na leđa u ispruženom položaju s rukama ispruženim uz tijelo. Uz njega pronađene su i razbacane kosti nekoga starijeg pokopa u grobnici. Iako do pisanja rada još uvijek nisu dobiveni rezultati 14C datiranja, a uz pokojnike nisu pronađeni databilni nalazi, prema stratigrafskim odnosima i karakteristikama samog objekta, možemo ga najvjerojatnije svrstati u vrijeme prije ra-

riods of the Middle Ages by the finds. The bronze two-part double-loop clasps (“*ažule*”) are broadly dated, but the finds of rings, especially signet rings with a depiction, date these graves from the end of the 14th to the end of the 16th century.

The oldest documented phase of burials in this part dates back to the older phase of the church, from the time when it had only one apse and when there was a cemetery in the area of the triapsal section, but also outside it. These are burials in a common earthen pit, in fact these are their remains, since a good part of them was destroyed by later burials or the construction of the triapsal section of the church. There were no finds in these graves, but the situation in which some of these graves are located under the walls of the three-apse section gives them a *terminus ante quem*, i.e. places them in the period before the construction of the church extension. Judging by the finds from the cemetery area explored in the first campaign, they could be dated to the 10th/11th century at the earliest (Vujević *et al.* 2023), although, given that they do not have the architecture or finds of the oldest burials found in that part of the cemetery, they are probably somewhat younger than that.

The difference compared to the previous campaign is that during this year's excavations, finds from the time of Late Antiquity were unearthed. The remains of a corner of a building made of carved stone bound with plaster were found in the northwestern corner of the church extension, after the removal of the graves. The building does not follow the orientation of the church, so it is questionable whether it is a sacred building. Its interior was covered with a layer of soot, under which thin marble slabs were found, which probably constitute the paving of the said space. In the very corner of the building there was also a grave that broke through the floor of the building. The stone-built tomb was covered with a 17 cm thick sandstone slab that cracked due to later burials in the same place. All sides of the grave are plastered. The deceased was found *in situ* in the grave, lying on his back in an extended position with his arms alongside his body. Scattered bones from an older burial in the tomb were also found next to him. Although at the time of writing the paper, 14C dating results had not yet been obtained, and no datable finds had been found with the deceased, based on the stratigraphic relationships and characteristics of the structure, we can most likely date it to the time



⋮ Retrogradna evolucija (foto: N. Čuk)
⋮ Retrograde evolution (photo: N. Čuk)





noga srednjeg vijeka.

Uz sve navedeno, rijetki nalazi helenističke keramike, kao i oni iz ranoga antičkog razdoblja pokazuju da na ovom području možemo očekivati tragove aktivnosti i iz ranijih perioda.

before the Early Middle Ages.

In addition to all of the above, rare finds of Hellenistic pottery, as well as those from the early phases of classical antiquity, suggest that we can expect traces of activity from earlier periods in this area.

LITERATURA / REFERENCES

- AZINović BEBEK, A. 2021, Kositreni kalež iz groba kraj kapele sv. Ane u Gornjem Kosinju, *Starohrvatska prosvjeta*, III, 48/2021, 267–282.
- BARAKA, J., ŠUĆUR, J. 2011, Numizmatički nalazi s arheološkog lokaliteta Pakoštane – Crkvina, *Archaeologia Adriatica*, IV/2010, 357–368.
- BRADARA, T., KRNJAK, O. 2015, *Temporis signa. Arheološka svjedočanstva istarskog novovjekovlja*, Pula: Arheološki muzej Istre.
- BURIĆ, T. 2001, Putalj u srednjem vijeku, T. Burić, S. Čače, I. Fadić, *Sv. Juraj od Putalja*, Split, 151–322.
- EGAN, G., PRITCHARD, F. 2002, *Medieval finds from excavations in London 3, Dress Accessories c. 1150- c. 1450*, London: Boydell Press.
- GILCHIRST, R., SLOANE, B. 2005, *Requiem: the medieval monastic cemetery in Britain*, London: Museum of London.
- GUSAR, K., VUJEVIĆ, D. 2014, Grob 75 s lokaliteta Pakoštane – Crkvina, *Archaeologia Adriatica*, VII/2013, 271–300.
- MONTENEGRO, E. 2012, *I dogi e loro monete*, Novara.
- PETRINEC, M. 2008, *Groblja od 8. do 11. stoljeća na području ranosrednjovjekovne hrvatske države*, Split: Muzej hrvatskih arheoloških spomenika.
- PETRINEC, M. 2009, Groblje na Crkvini u Biskupiji – rezultati revizijskih istraživanja Stjepana Gunjače, *Starohrvatska prosvjeta*, III, 36, 163–197.
- VUJEVIĆ, D., GLAVAŠ, V., GUSAR, K. 2023, Rezultati novih istraživanja na rtu Ljubljana u Ljupču kod Zadra, *In situ – godišnjak Odjela za arheologiju*, 1/2022, 20–34.
- VUJEVIĆ, D., GLAVAŠ, V., GUSAR, K. 2024, Arheološka istraživanja na lokalitetu Ljubljana u Ljupču kod Zadra, *In situ – godišnjak Odjela za arheologiju*, 2/2023, 18–29.