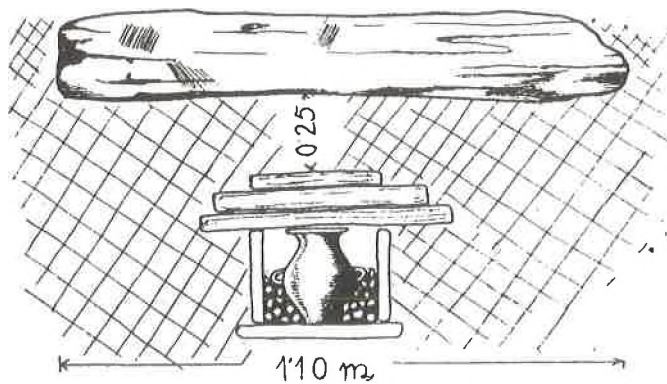
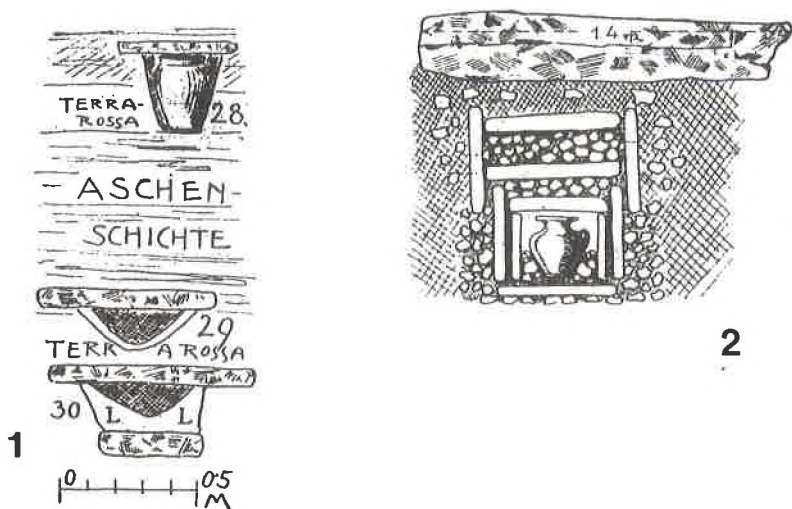
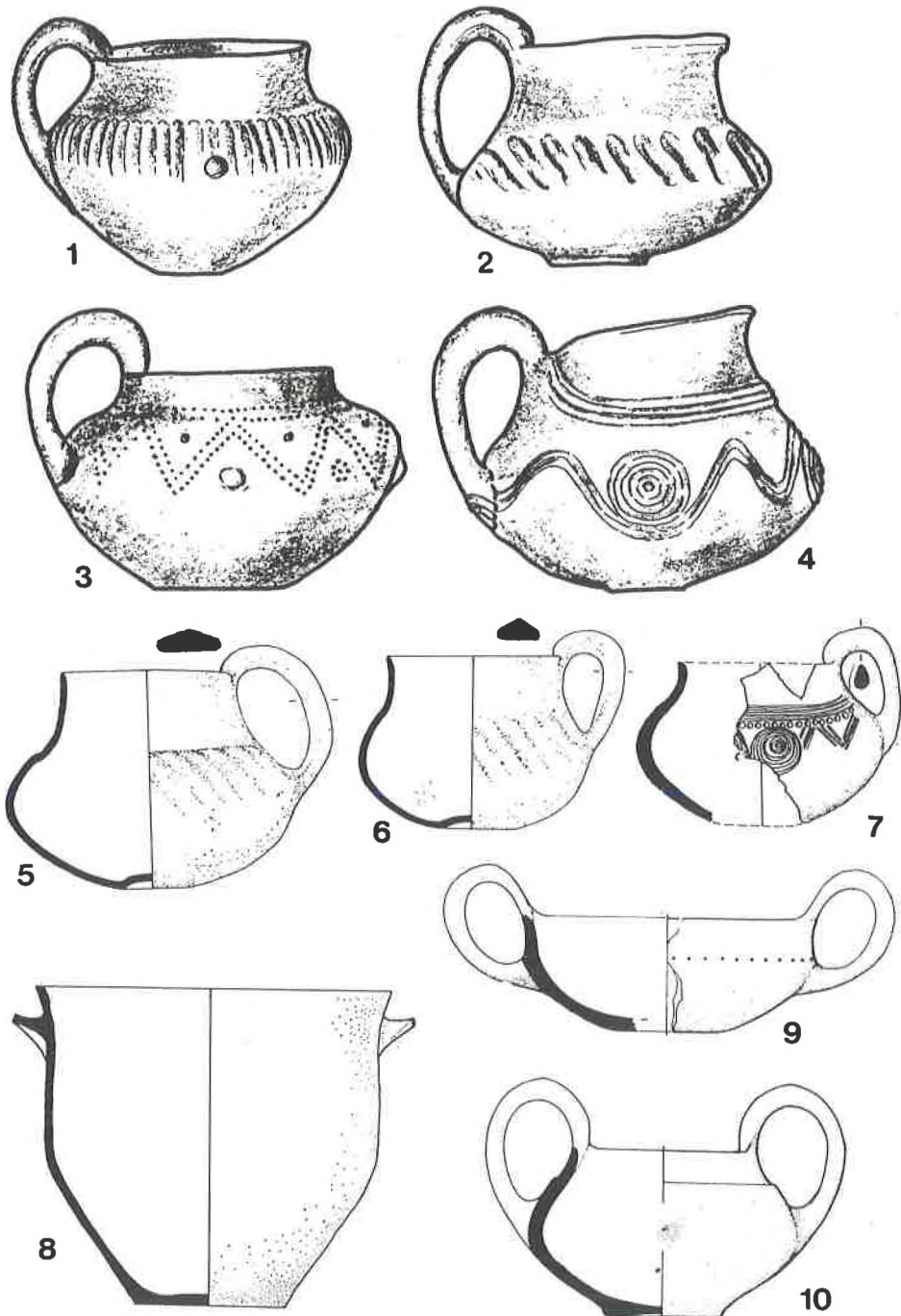


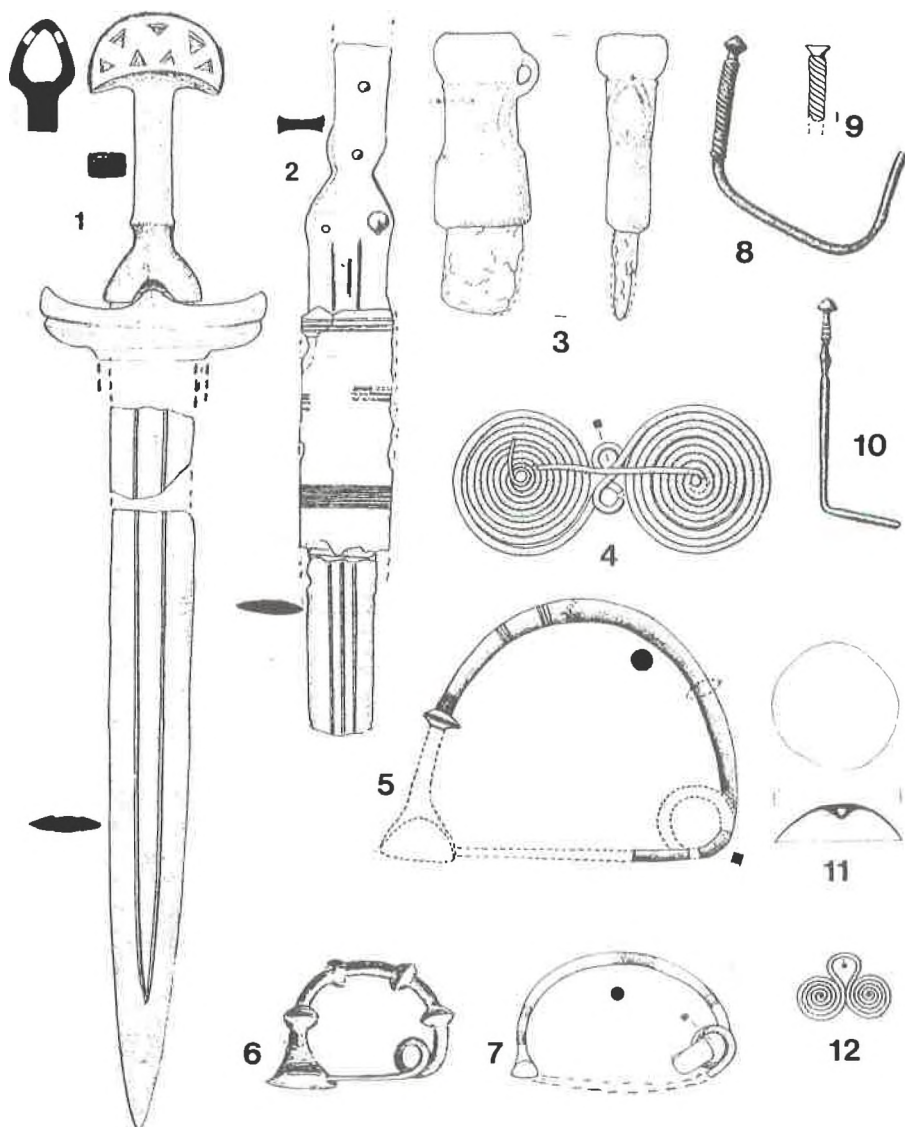
Temeljni oblici gradinskih naselja na istarskom području: 1. Klemenka (Clemenoga), 2. Cattinara, 3. Ulinka kod Brestovice, 4. Tabor, 5. Sv. Martin Komenski, 6. Griža (Monte Grisa), 7. Gradišće Kobdil (po Marchesetti 1903).



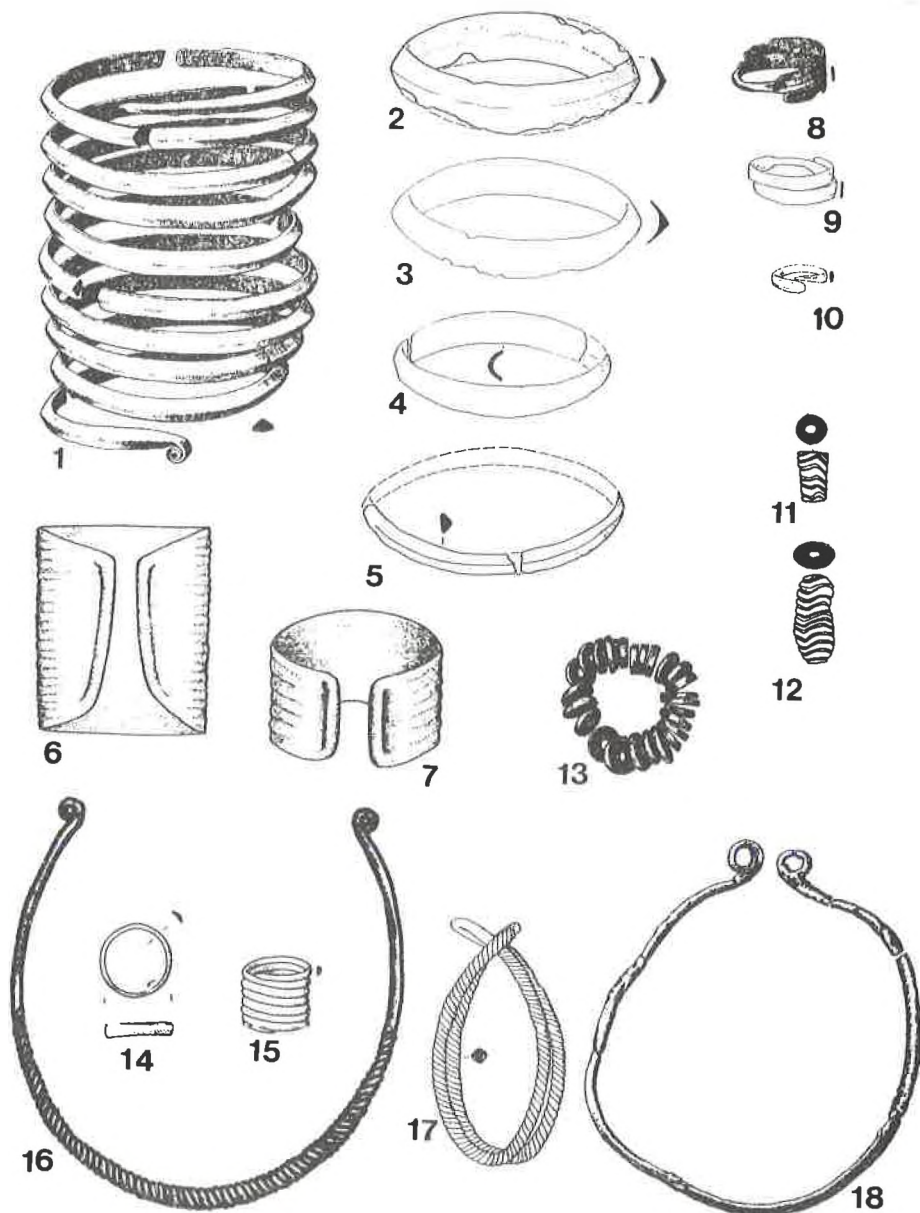
Pula: temeljne vrste grobova u istarskoj kulturi (po Gnirsu, 1925).



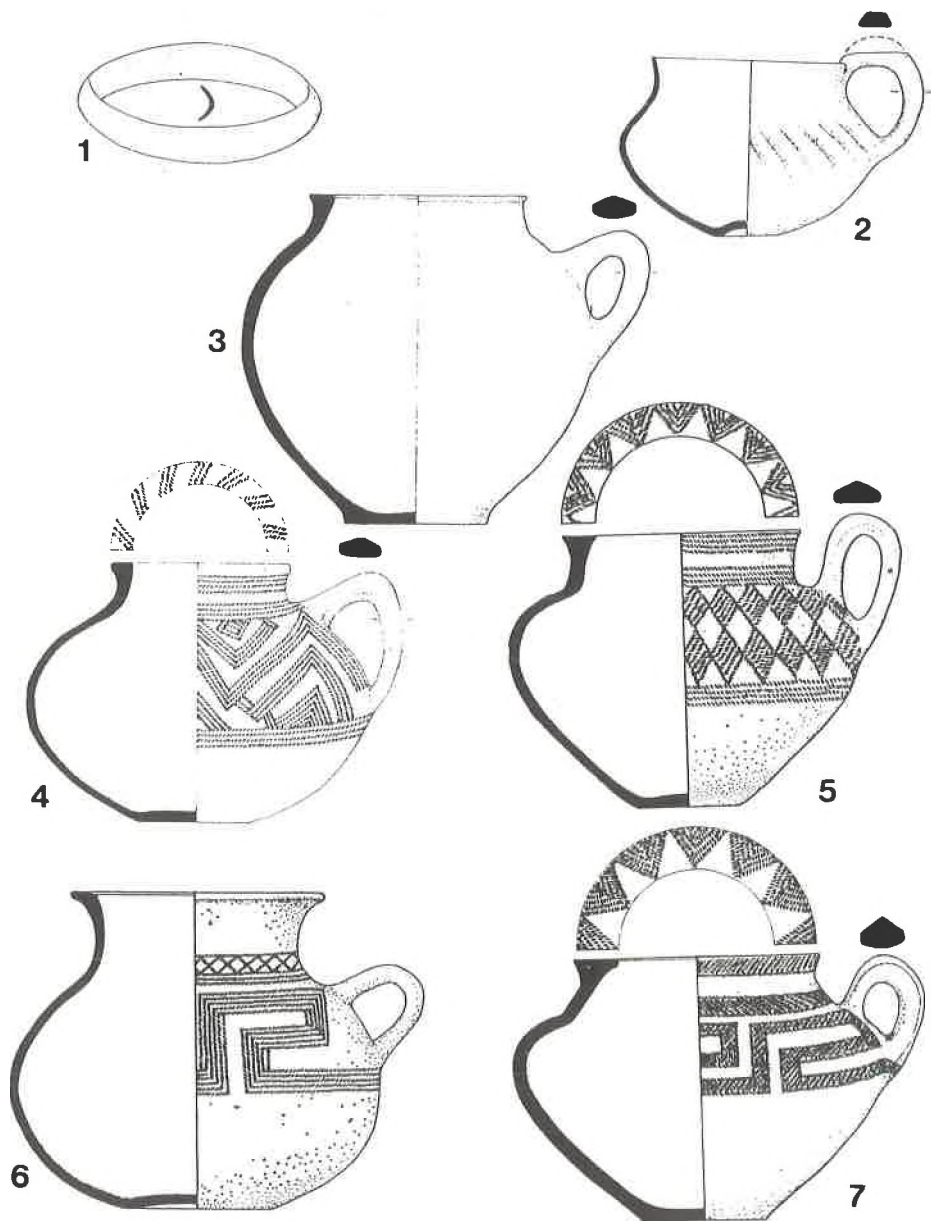
Temeljni oblici I. faze istarske kulture, 9. st.: 1—4. Nesakcij (po Puschiju, 1905), 5—8. Gradina iznad Limske drage, gr. 9, 18, 19 (po K. Mihovilić, 1972), 9, 10. S. Barbara kod Milja (po *Preist. d. Caput Adriae*, 1983).



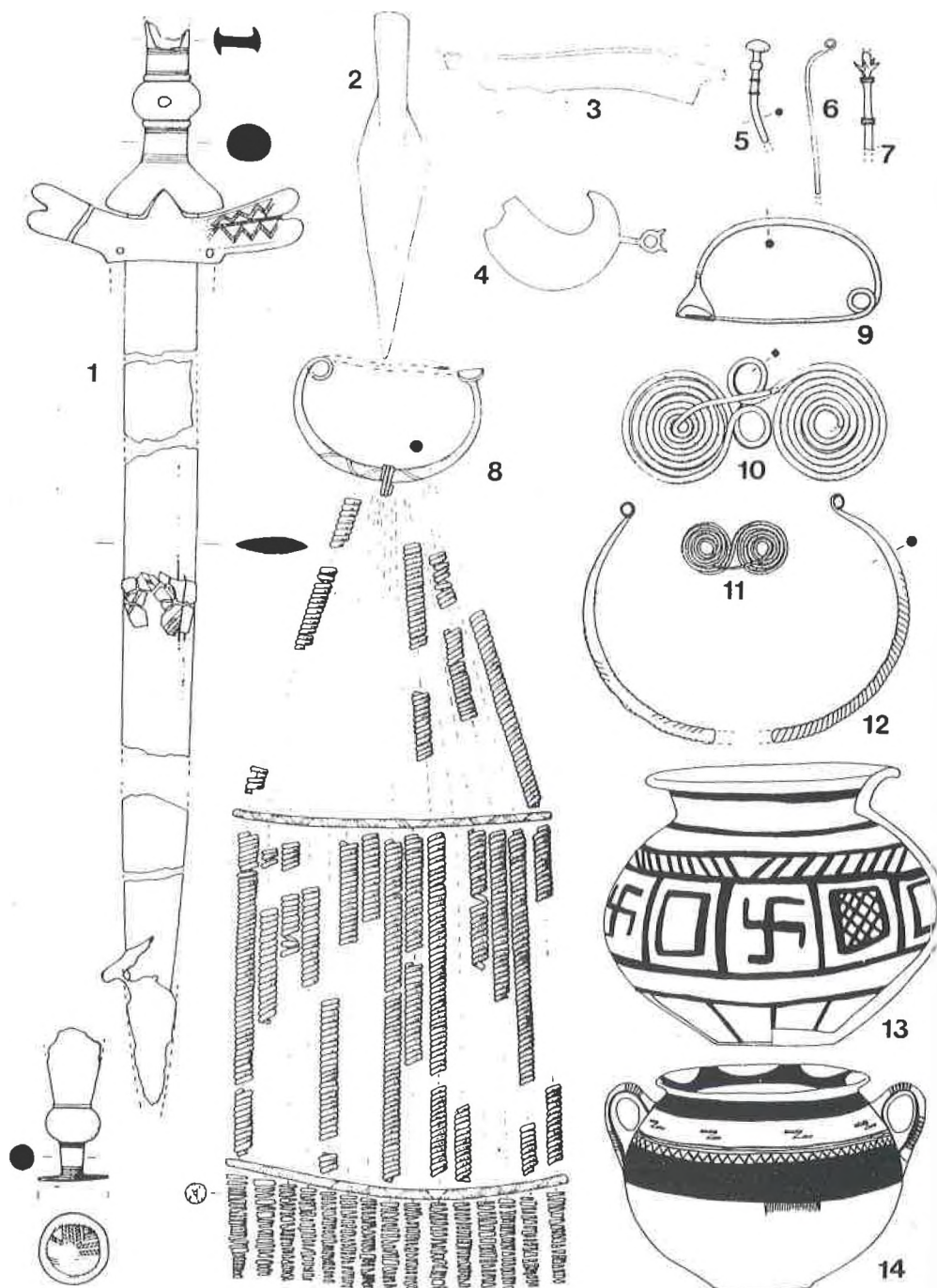
Temeljni oblici I. faze istarske kulture, 9. st.: 1—7, 9. Brežec, gr. 1—6, 91, 116, 125, 158, 272 (po Steffè—Vitri—Righi, 1977; 6. po Marchesettiju, 1903), 8. Nesakcij, 10—12. Gradina iznad Limske drage, gr. 19, 25, 58 (po K. Mihovilić, 1972).



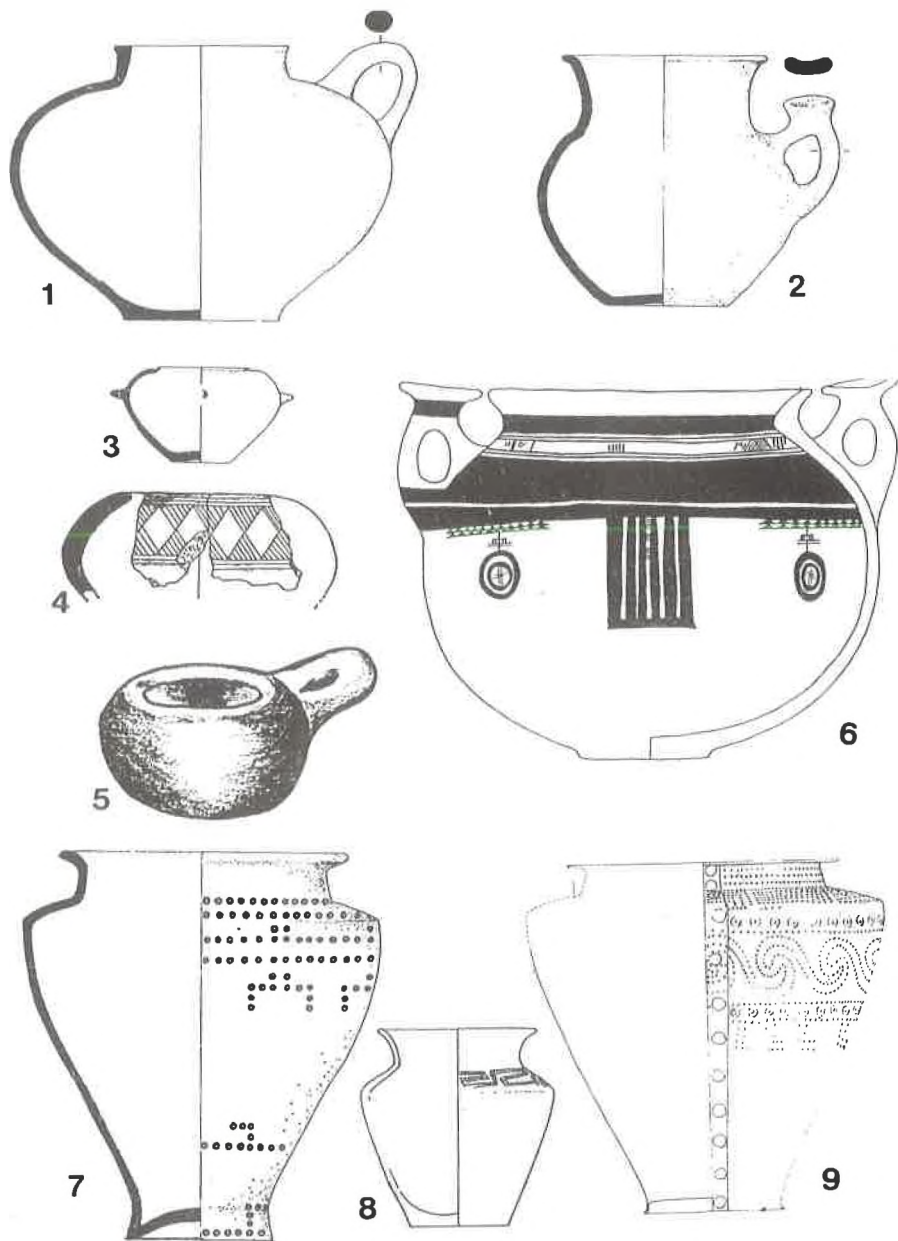
Temeljni oblici I. faze istarske kulture, 9. st.: 1—13, 15, 17. Gradina iznad Limske drage, gr. 15, 21, 25, 36, 56—59 (po K. Mihovilić, 1972), 14. Brežec, gr. 116 (po Steffè—Vitri—Righi, 1977).



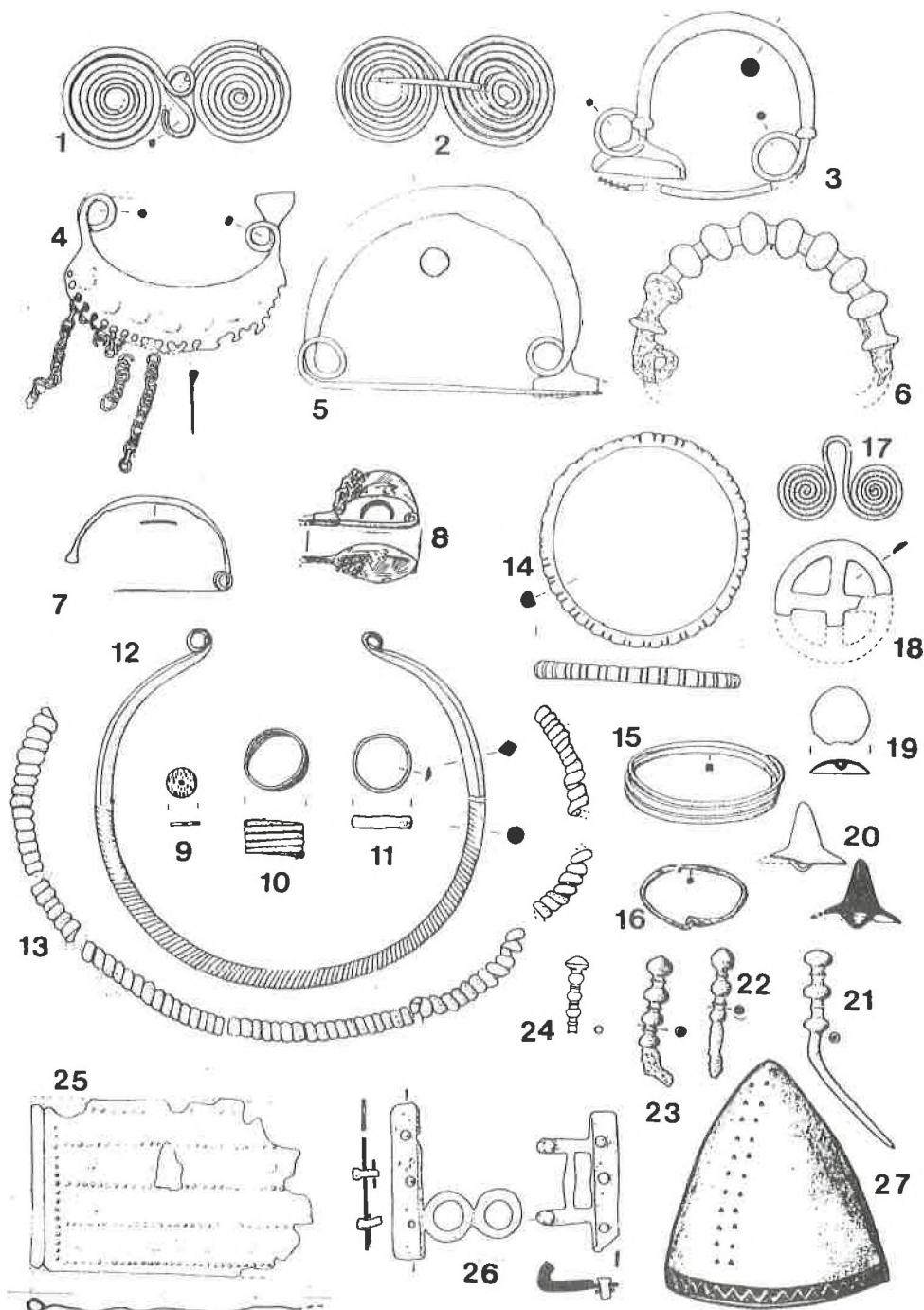
Temeljni oblici II. faze istarske kulture, 8. i 7. st.: Gradina iznad Limske drage, gr. 5—7, 27, 31 (po K. Mihovilić 1972).



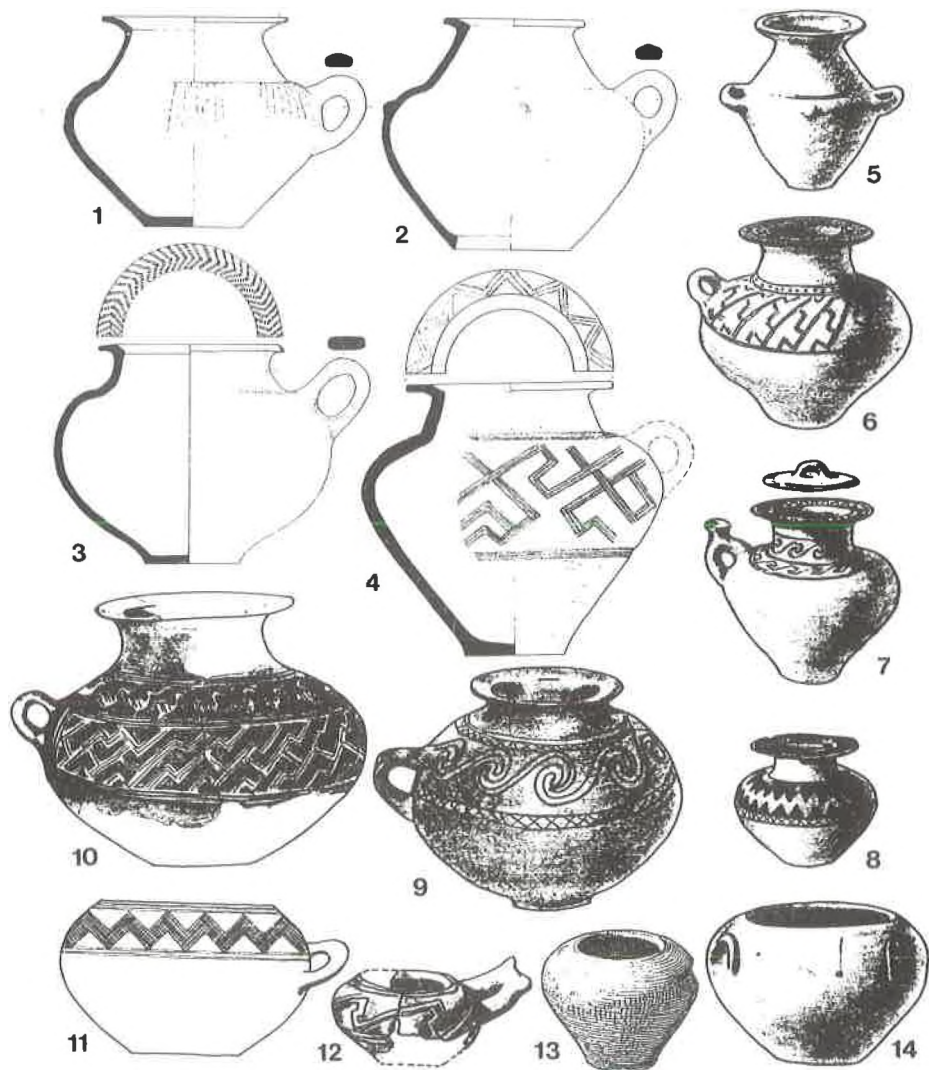
Temeljni oblici II. A faze istarske kulture, 8. st.: 1—12. Brežec, gr. 49, 50, 131, 136, 165, 280, 285 (po Steffè—Vitri—Righi, 1977), 13, 14. Nesakcij (po Bato-
viću, 1983).



Temeljni oblici II. B faze istarske kulture, 7. st.: 1—3. Gradina iznad Limske drage, gr. 7 (po K. Mihovilić, 1972), 4, 6, 7. Beram, gr. 12, 44, 87. (po V. Kučar, 1979, Batoviću, 1983), 5, 9. Picugi, gr. 21/II, 5 35 (po Amorosu, 1889, *Preist. d. Caput Adriae*, 1983), 8. Kaštel kod Buja (po Bačiću, 1957).



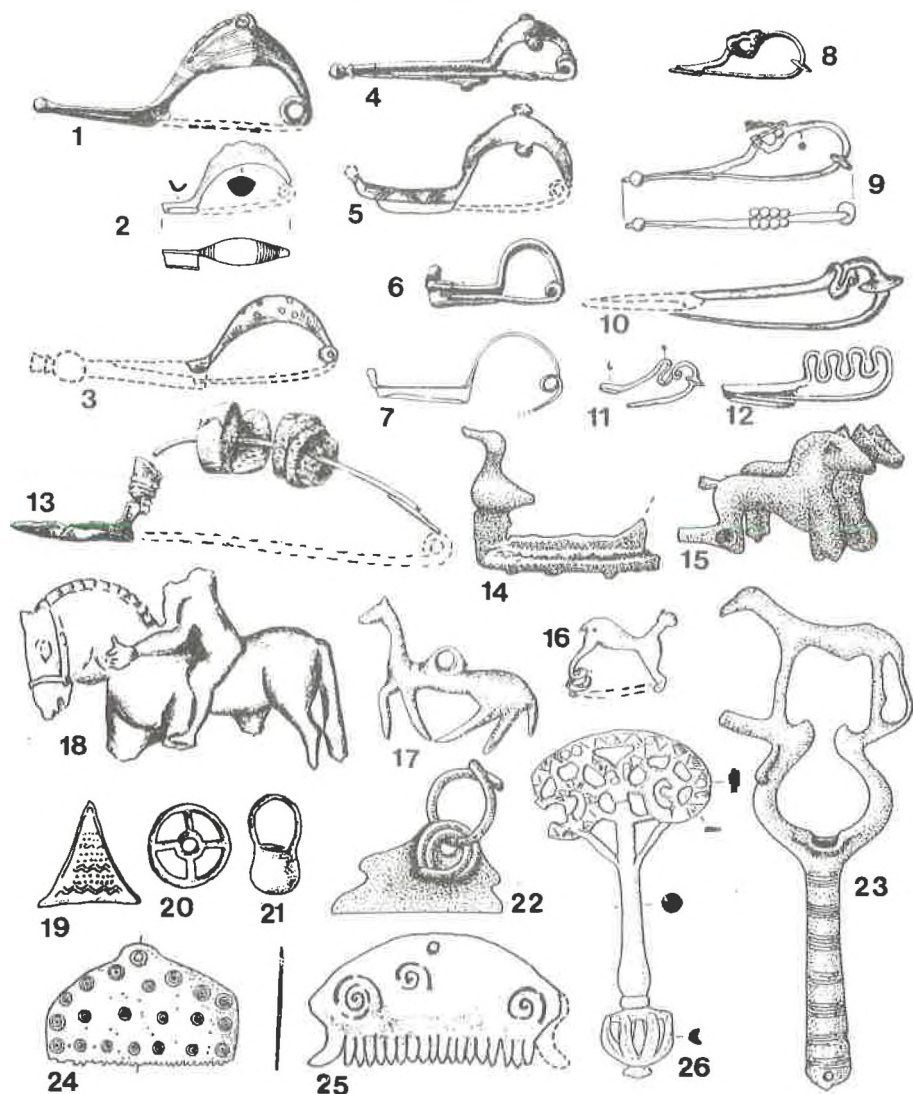
Temeljni oblici II. B faze istarske kulture, 7. st.: 1—6, 9—14, 17, 18, 20, 25. Brežec, gr. 11, 150, 155, 227, 236, 259, Sn 29 (po Steffè—Vitri—Righi, 1977), 7. Nesakcij (po V. Kučar, 1979), 8, 15, 16, 21—23, 26. Beram, gr. 1, 44, 72, 96 (po V. Kučar, 1979), 19. Gradina iznad Limske drage, gr. 7 (po K. Mihovilić, 1972), 24, 27. Picugli, gr. 19 II, 5/35 (po Amoruso, 1889. *Preist. d. Caput Adriae*,



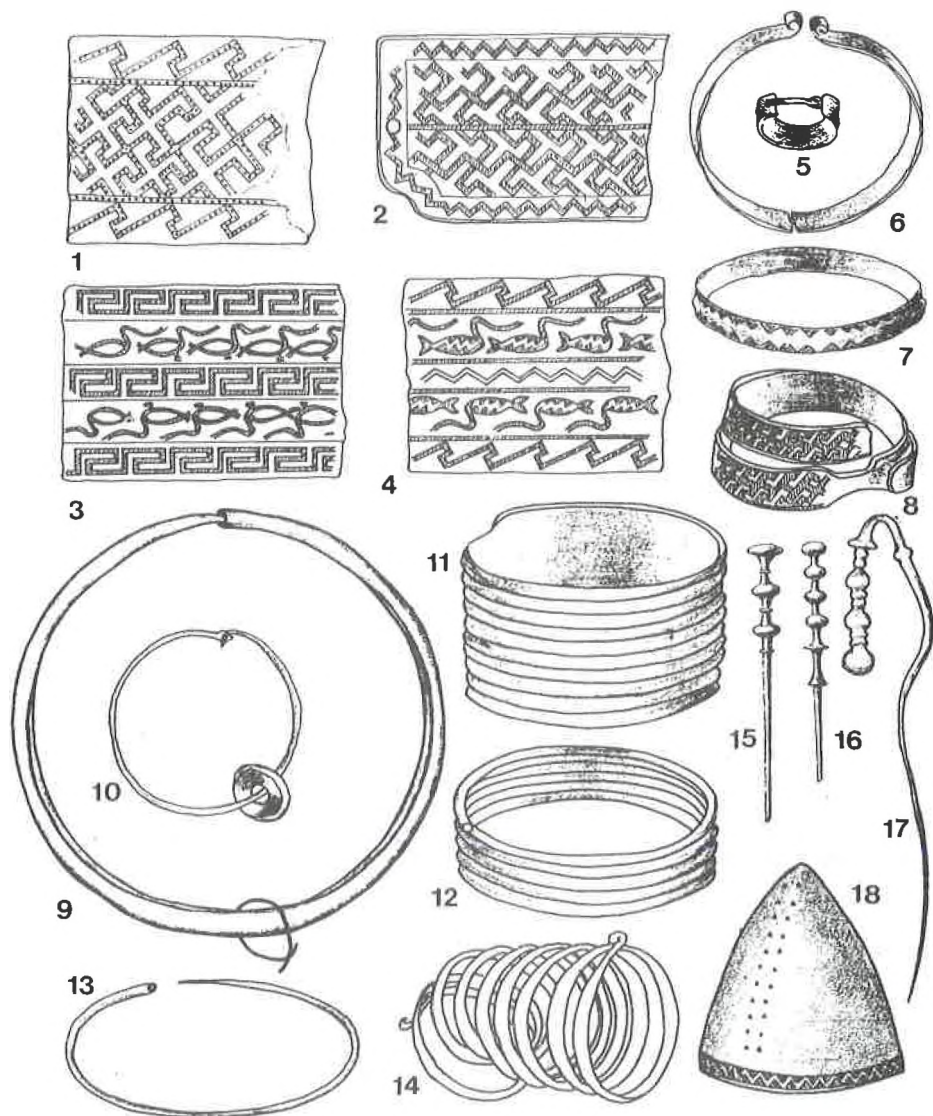
Temeljni oblici III. faze istarske kulture, 6. st: 1—4. Gradina iznad Limske drage, gr. 12, 32, 37 (po K. Mihovilić, 1972), 5—8, 13. Pula (po Gnirsu, 1925), 9, 11. Nesakcij (po Puschiju, 1905), 10, 12, 14. Picugl, gr. 1, 26, 46 I (po Amorosu, 1889).



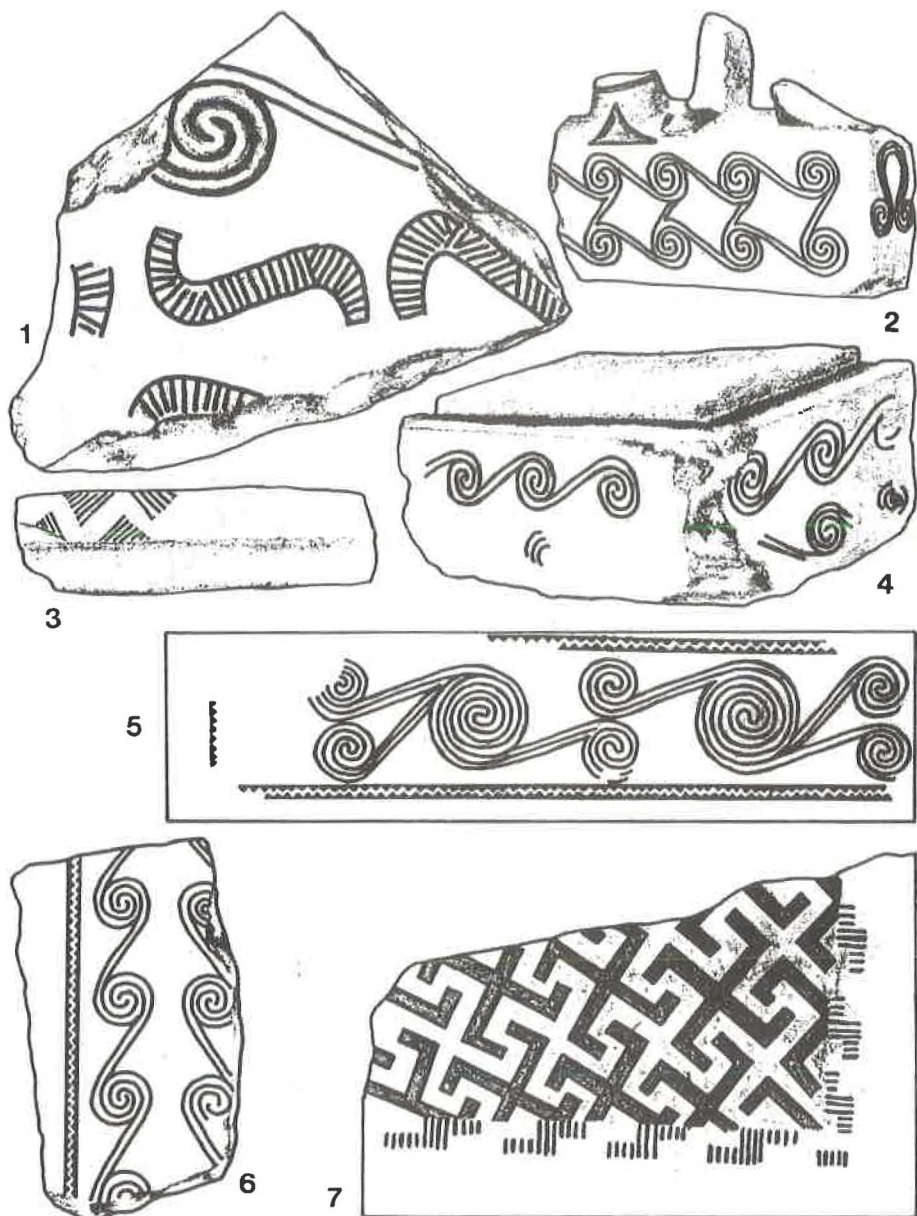
Temeljni oblici III. faze istarske kulture, 6. st.: 1, 3, 5, 9, 12—14. Nesakcij (po Puschiju, 1905, Batoviću, 1983), 4, 11. Beram (po V. Kučar, 1979), 2, 6—8, 10. Picugi (po Amorosu, 1889, Batoviću, 1983).



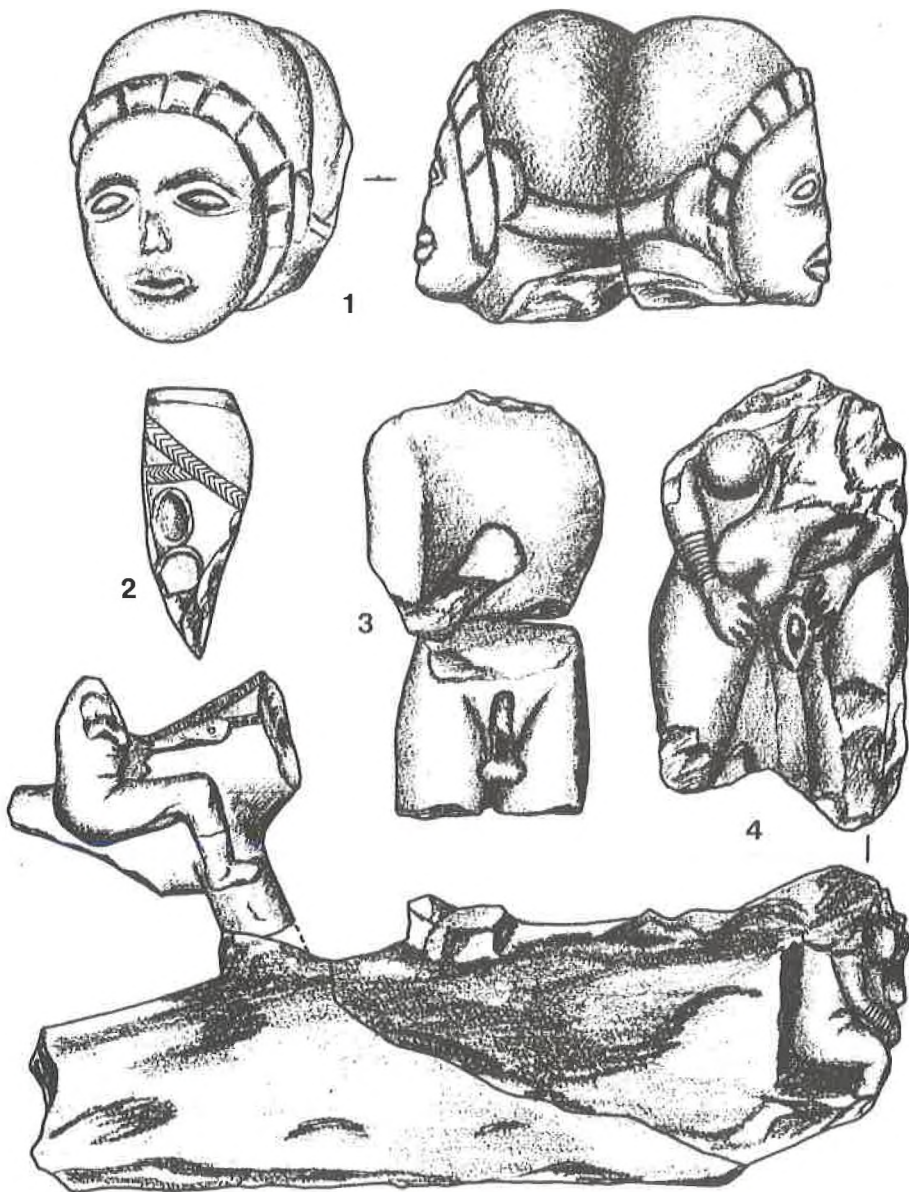
Temeljni oblici III. faze istarske kulture, 6. st.: 1, 3, 5, 8, 10, 19—22, 26. Picugi (po Amorosu, 1889, Mladinu, 1980, K. Mihovilić, 1986), 2. Gradina iznad Limske drage (po K. Mihovilić, 1972), 7, 12. Brežec, gr. 58, 113 (po Marchesettiju, 1903, Steffe—Vitri—Righi, 1977), 4, 6, 13, 14, 18, 23, 25. Nesakcij (po Puschiju, 1905, V. Kučar, 1979, Mladinu, 1980), 9, 11, 17, 24. Beram (po V. Kučar, 1979, Mladinu, 1980), 16. Kringa (po Sonji, 1966).



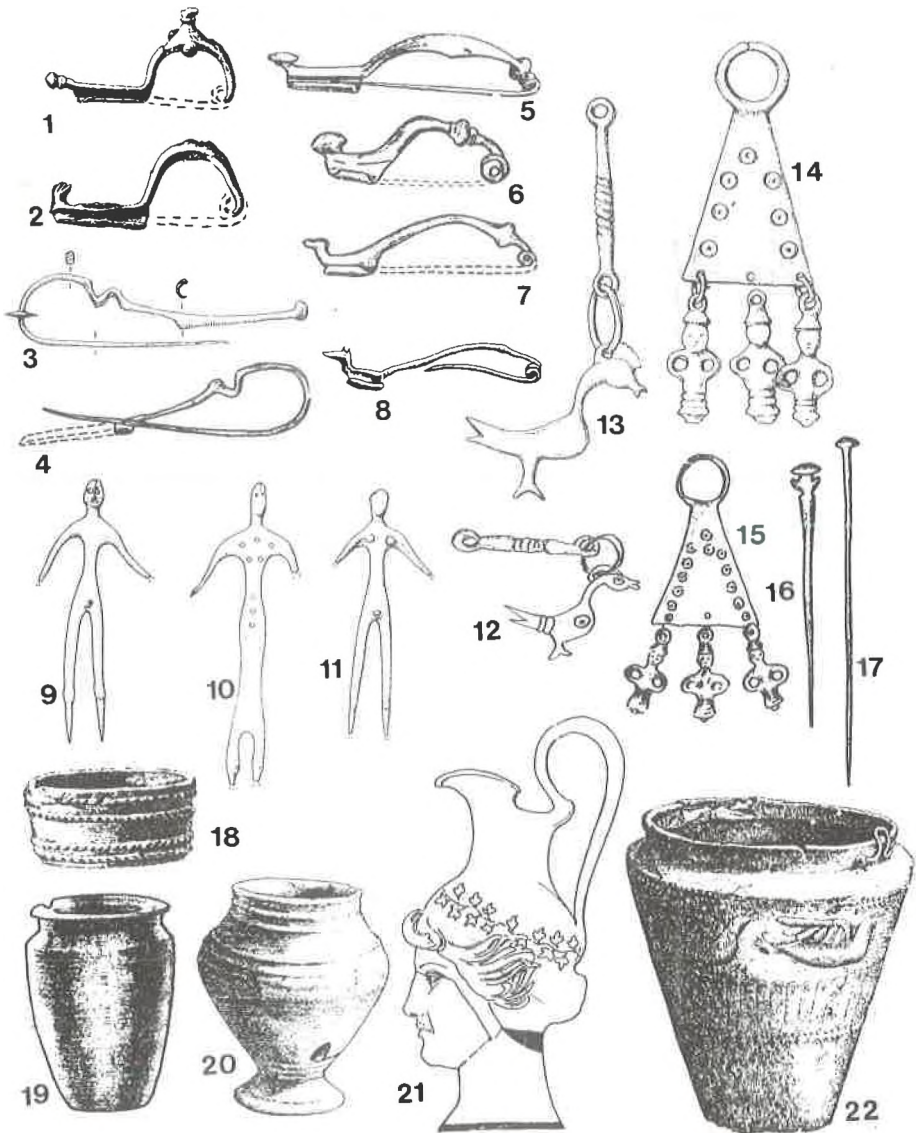
Temeljni oblici III. faze istarske kulture, 6. st.: 1—5, 8, 11—13, 17, 18. Picugi (po Amorosu, 1889), 10. Kaštel kod Buja (po Bačiću, 1957), 15, 16. Redipuglia (po Marchesettiju, 1903).



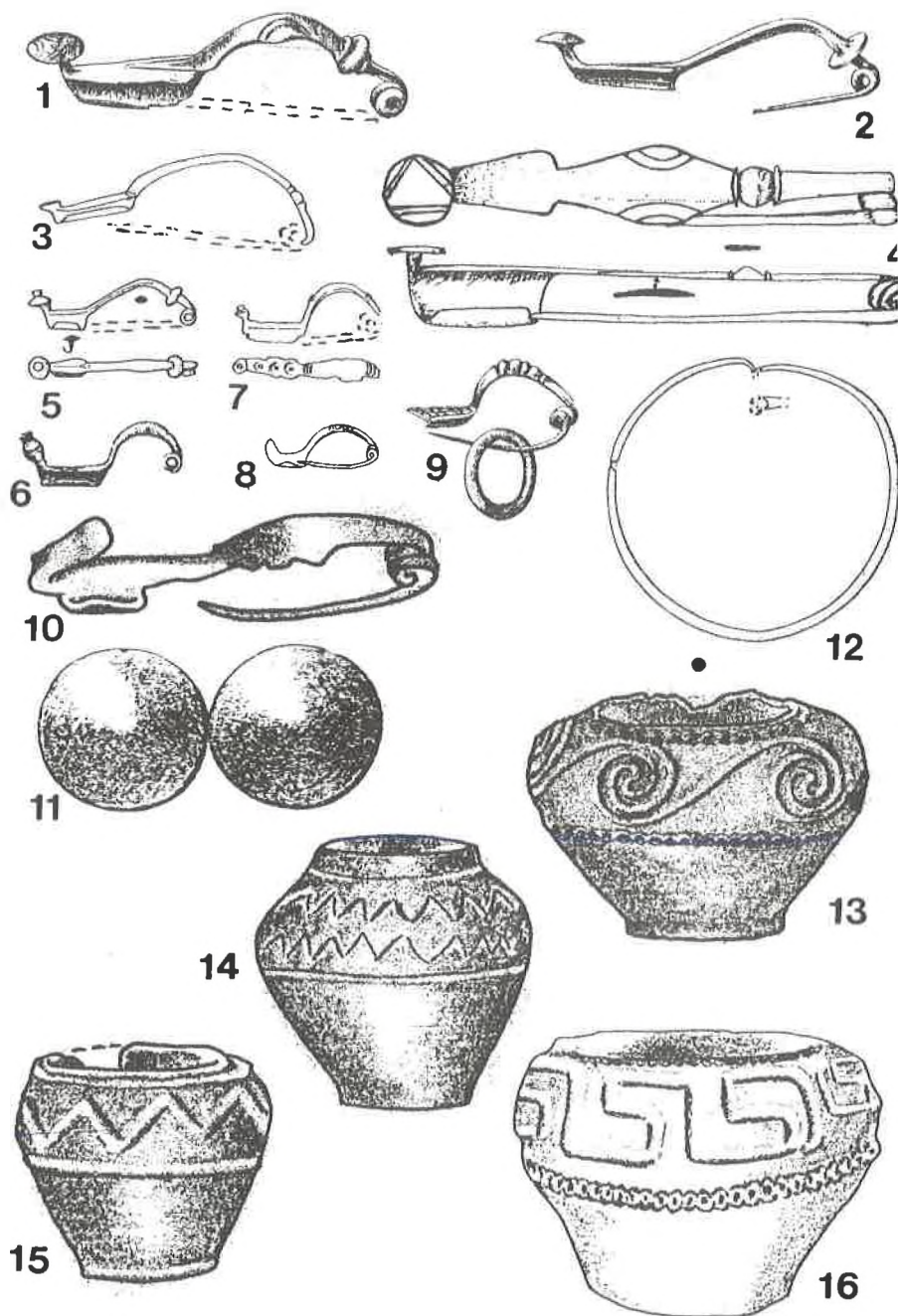
Temeljni oblici III. faze istarske kulture, 6. st.: Nesakcij (po Puschiju, 1905, Mladinu, 1964).



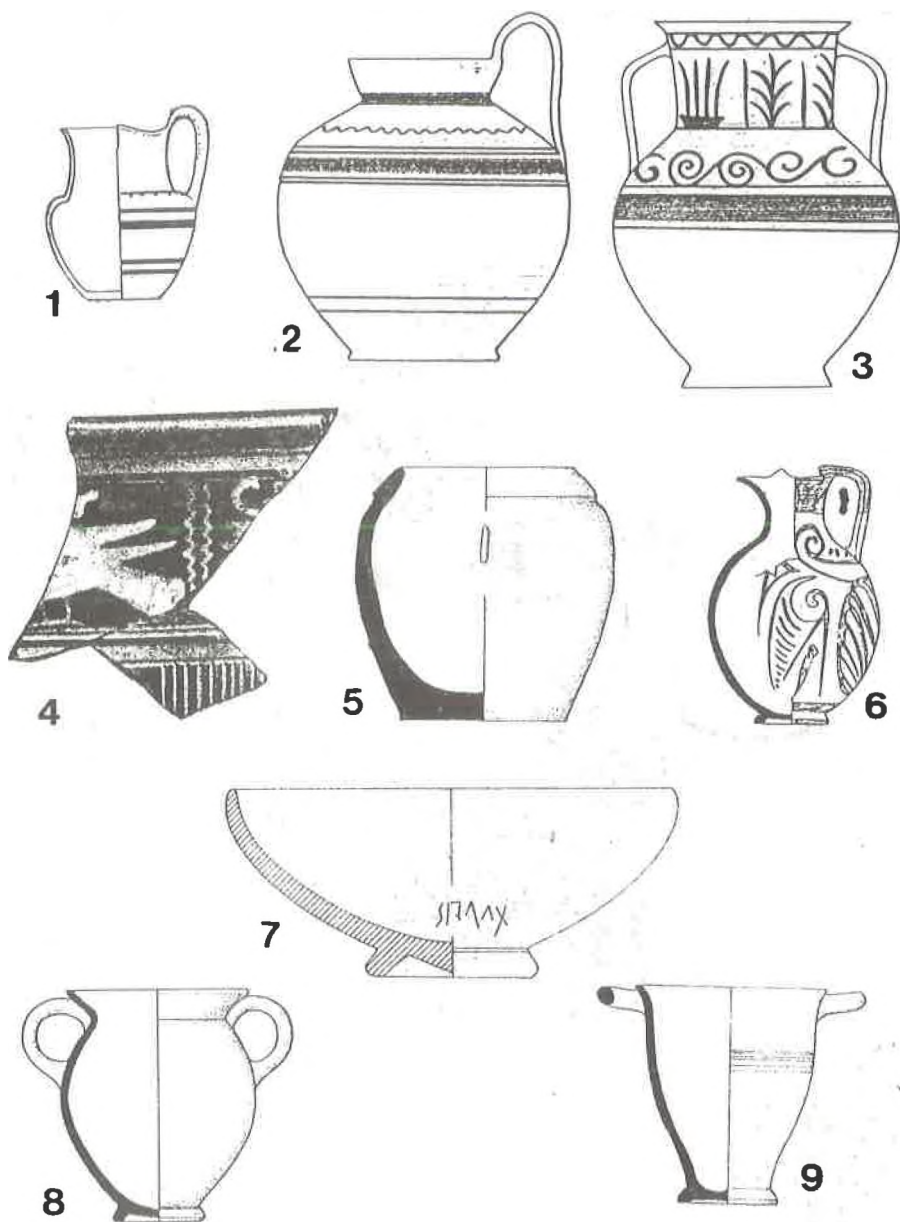
Temeljni oblici III. faze istarske kulture, 6. st.: Nesakcij (po Puschiju, 1905, Mladinu, 1964).



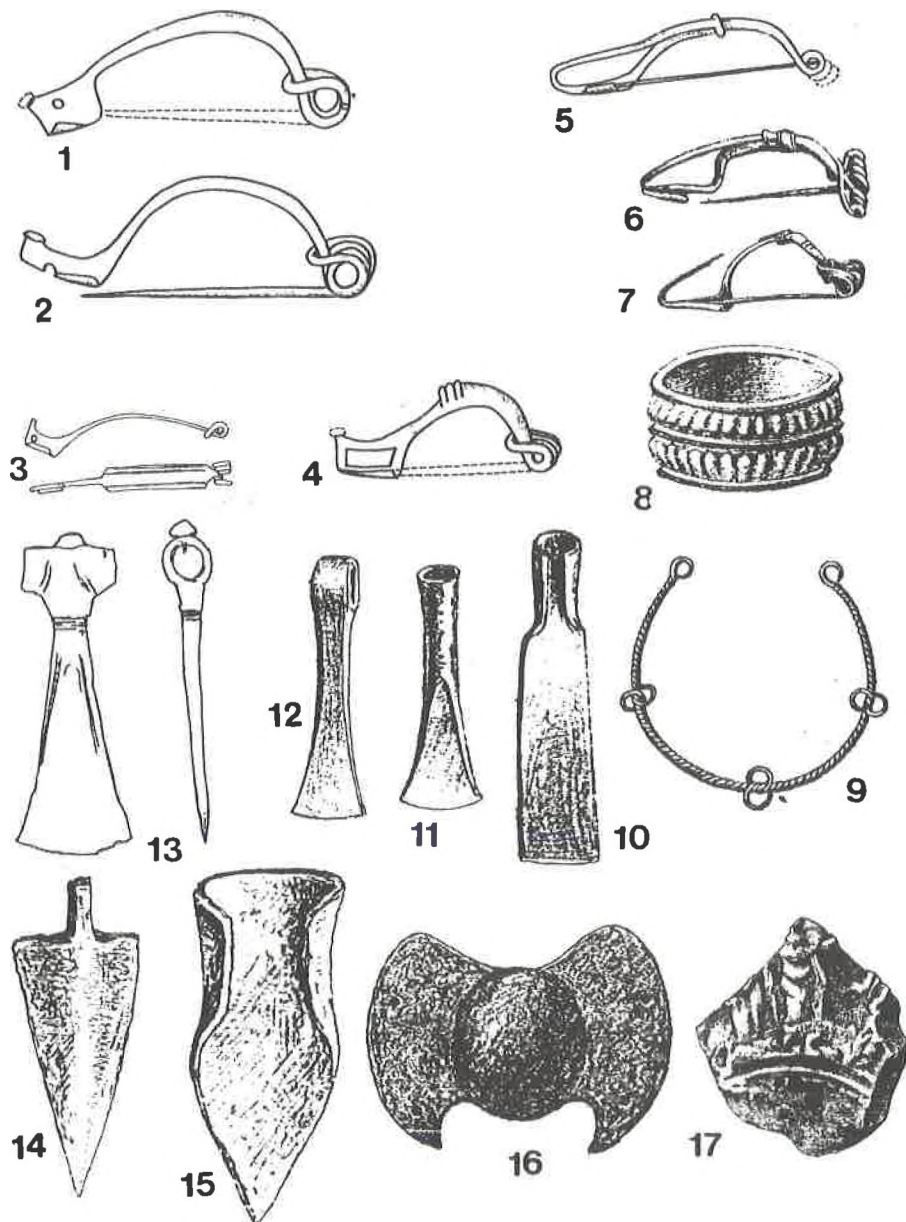
Temeljni oblici IV. faze istarske kulture, 5. st.: 1, 2, 20—22. Nesakcij (po Puschiju, 1905), 3. Repentabor — Monrupino (po Lonzi, 1970—72), 4, 7, 8, 15—19. Picugi (po Amorosu, 1889), 5, 9—11. Redipuglia (po Marchesettiju, 1903, *Preist. d. Caput Adriae*, 1983), 12. Kringa (po Šonji, 1966), 13, 14. Gradina Sv. Andrej Mali (po Stareu, 1970).



Temeljni oblici V. A faze istarske kulture, 4. i 3. st.: 1, 6, 13—16. Picugi (po Amorosu, 1889, Mladinu, 1964), 2, 9, 10. Nesakcij (po Puschiju, 1905), 4. Kringa (po Sonji, 1966). 5. Gradina iznad Limske drage (po K. Mihovilić, 1972), 11, 12. Brežec (po Marchesettiju, 1903, Steffé—Vitri—Righi, 1977).



Temeljni oblici V. A faze istarske kulture, 4. i 3. st.: 1—6. Nesakcij (po K. Mihovilić, 1986), 7. Stramare (po Lonzi, 1977), 8, 9. Picugi (po K. Mihovilić, 1986).



Temeljni oblici V. B faze istarske kulture, 2. i 1. st.: 3, 7, 13, 17. Nesakcij (po Puschiju, 1905), 6. S. Servolo, 8. Nova Vas, 9. Škocjan, 10, 14. Redipuglia, 11, 12, 16. Caporetto, 15. Tomai (po Marchesettiju, 1903).